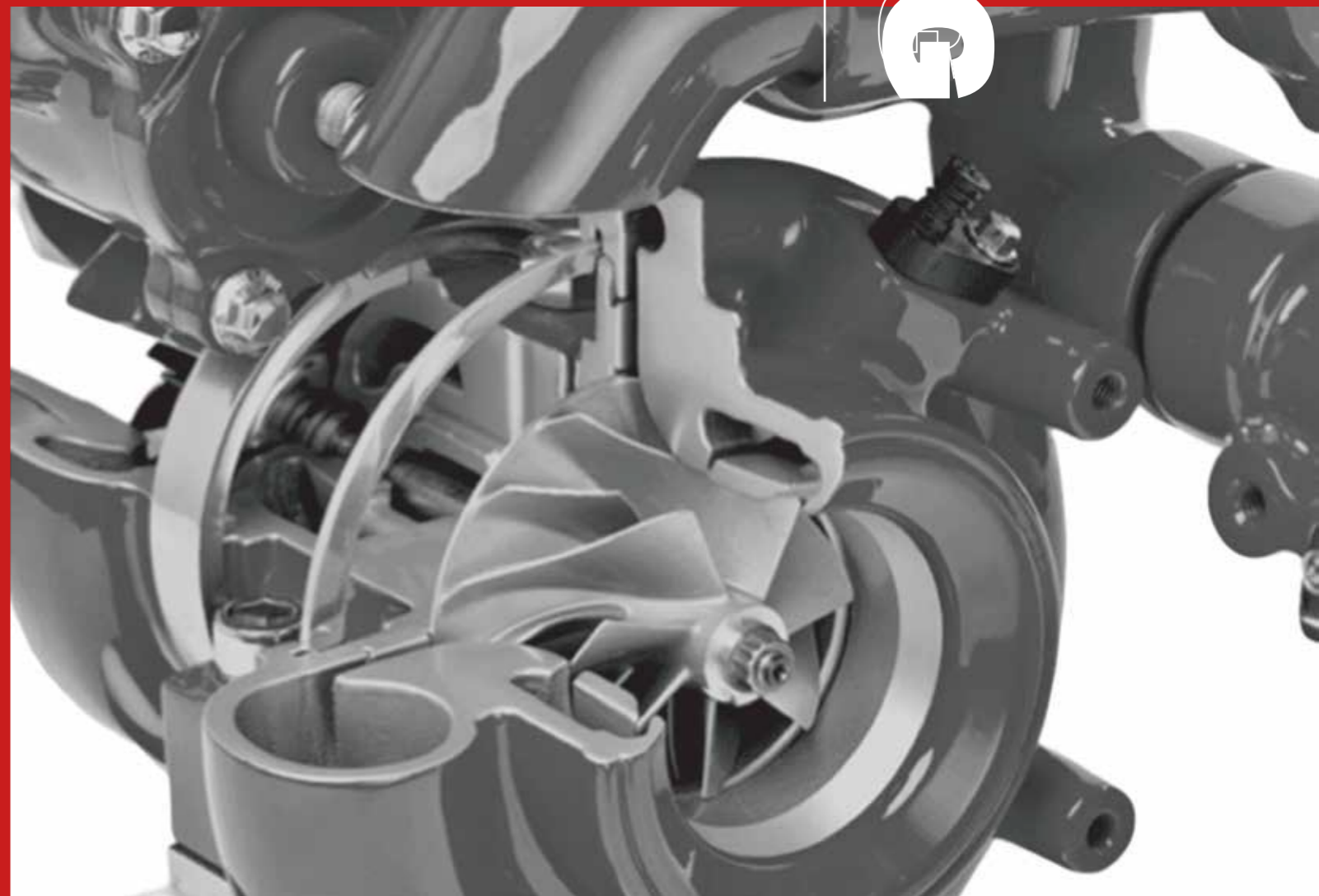




TURBO CATALOG

PASSENGER VEHICLE
COMMERCIAL VEHICLE
OFF HIGHWAY

North American Market
May 2025

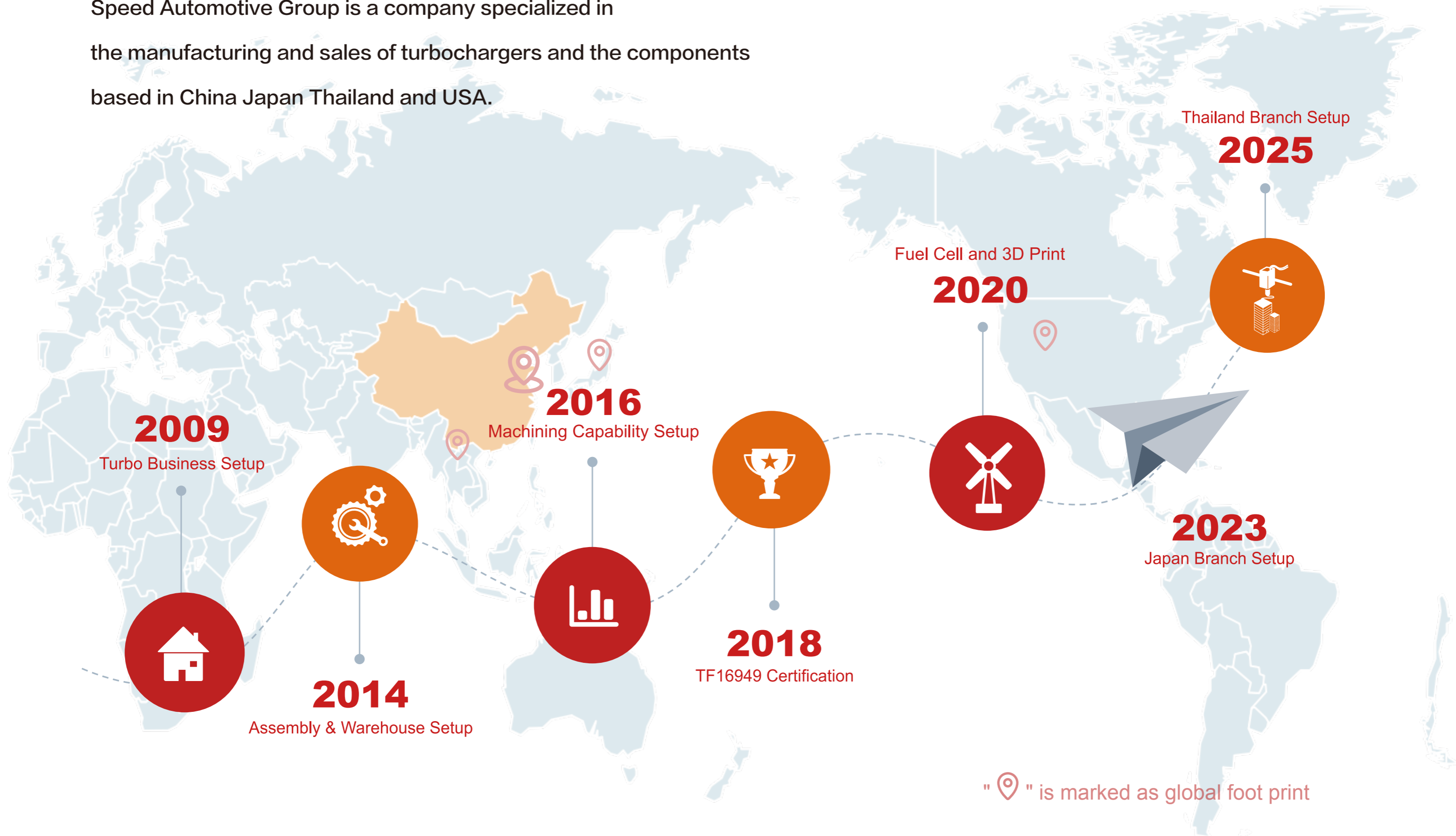


SPEED AUTOMOTIVE (THAILAND) CO., LTD.
SPEED PERFORMANCE & ENGINEERING CORP
WUXI SPEED AUTOMOTIVE & NEW ENERGY TECHNOLOGY CO., LTD.

Email	sales@speedturbo.net	Ins	Speed Turbo Technology
Website	www.speedturbo.net	Linked in	Speed Turbo Technology
Whatsapp	+86-13916379483	Facebook	Speed Turbo Technology

• COMPANY PROFILE

Speed Automotive Group is a company specialized in the manufacturing and sales of turbochargers and the components based in China Japan Thailand and USA.



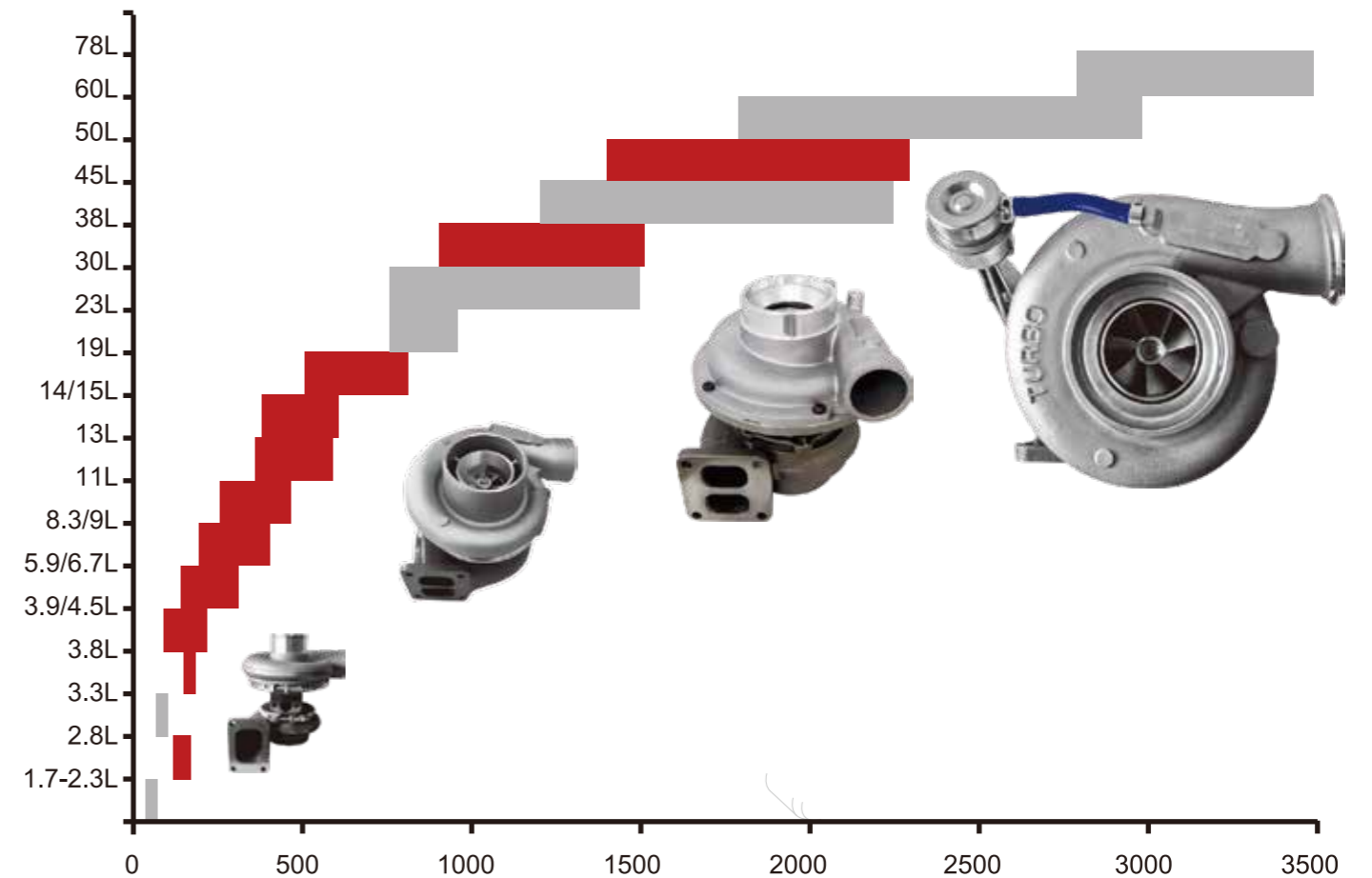
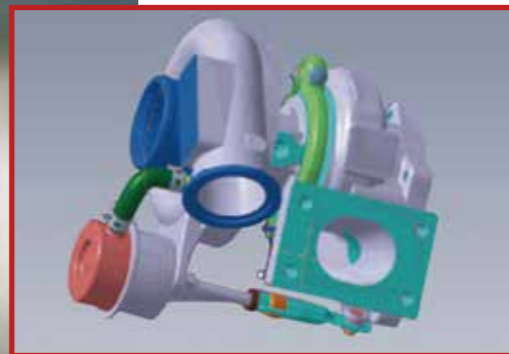
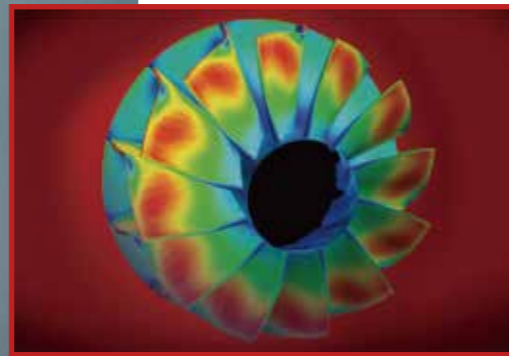
• SUPERIOR TECHNOLOGY



Our technical capacity has covered design, drafting, reverse engineering, product engineering, performance improving, proficient in CATIA, UG and other 3D softwares, modeling for customers quickly.

Through 3D print technology, we can achieve to make tooling rapidly for customers.

Speed Automotive Group has a various range of products, mainly used in diesel and gasoline engines, with 50 to 3,500 horsepower engines to match. Our products are widely used in cars, passenger cars, commercial vehicles, construction machinery, racing and tuning cars, etc., supporting the world famous car factories.



01.

PV

AUDI / VW	/01
CHEVROLET GMC	/02
CHRYSLER	/03
CITROEN PEUGEOT	/04
CUMMINS DODGE	/05
FORD	/06
GM	/10
GREAT WALL	/11
HYUNDAI / KIA	/12
ISUZU	/13
M-BENZ	/14
MINI	/15
NISSAN	/16
OPEL	/17
RENAULT	/18
SSANGYONG	/19
TOYOTA	/20

02.

CV

CUMMINS	/21
CUMMINS DODGE	/22
DAF	/23
DETROIT	/24
FIAT IVECO	/26
FORD NAVISTAR	/27
GAZ	/29
HYUNDAI KIA	/30
KAMAZ	/31
M-BENZ	/32
MAN	/38
RENAULT	/41
SCANIA	/43
VOLVO	/45
VW	/47

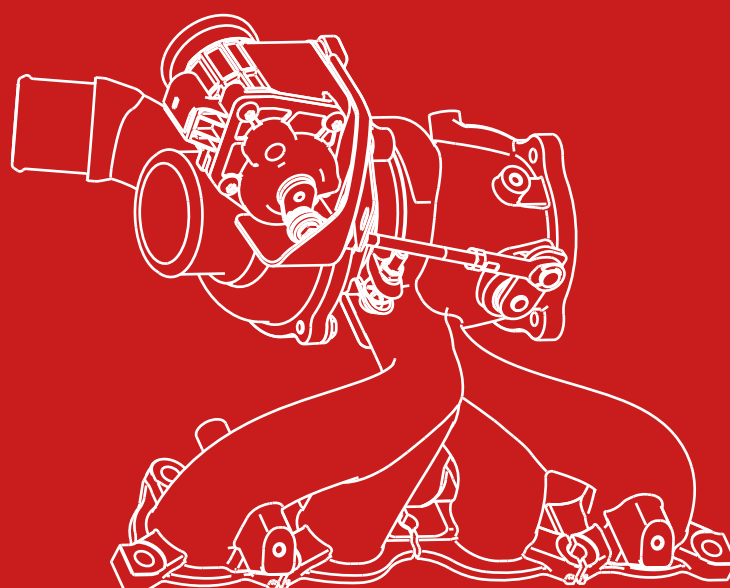
03.

OFF HIGHWAY

CATERPILLAR	/48
HITACHI	/50
JOHN DEERE	/51
KOMATSU	/52
M-BENZ	/53
PERKINS	/54

01.

PV



● AUDI / VW



9B03-041-129TM

Description. AUDI A4L(828,B8) 2008-2016.
AUDI A6L(4X8,C7) 2012-2015 / AUDI Q5 (83B) 2009-2018

Vehicle OEM No. 06H145702T / S / Q / M
06H145702L / G / 06H145713C
06H145713D / 06H145704D / 06H145704K

Turbo Model. K03

Turbo OEM No. 9VA01 / 5303-970-0291

Displacement 2.0L Petrol
PS : with milled aluminium compressor wheel



9G20-021-083

Description. Agrale Caminh 4.10TCA 4.3L 1995

Vehicle OEM No. 905292010041 / 905292010056
905292010063 / 90529201006000

Turbo Model. T300

Turbo OEM No. 465819-0003

Displacement 4.3L Diesel

● CHEVROLET GMC



9G17-033-011

Description. CHEVROLET COLORADO 2011-

Vehicle OEM No. 12645143 / 55506039

Turbo Model. GTB1756VK

Turbo OEM No. 797001-0002

Displacement 2.8L Diesel

● CHRYSLER



9C35-021-137

Description.	DODGE RAM 2500 5.9L ISB 2003
Vehicle OEM No.	5086863AA / 5086863AB R5086863AA / R5086863AB R5143256AA
Turbo Model.	HY35W
Turbo OEM No.	4035044 / 3599811
Displacement	5.9L Diesel

● CITROEN PEUGEOT



9M02-021-136

Description.	Citroen C3 4HT 1.6L 2005-
Vehicle OEM No.	9682881780
Turbo Model.	TD025S2-06T4
Turbo OEM No.	49173-07506 / 49173-07507
Displacement	1.6L Diesel

Popular Coming soon

Popular Coming soon

● CUMMINS DODGE



👍 9C03-021-001

Description.	DODGE RAM 2500 PICKUP 2004-2009 DODGE RAM 3500 PICKUP 2004-2007
Vehicle OEM No.	3538415 / 4089797
Turbo Model.	HE351CW
Turbo OEM No.	4043600
Displacement	5.9L Diesel



👍 9C03-021-008

Description.	DODGE RAM 2500 PICKUP 1999-2002 DODGE RAM 3500 PICKUP 1999-2002
Vehicle OEM No.	3800799 / 3592767
Turbo Model.	HX35W
Turbo OEM No.	3592766 / 3774569
Displacement	5.9L Diesel



👍 9C03-021-013

Description.	DODGE RAM 2500 PICKUP 2000-2002 DODGE RAM 3500 PICKUP 2000-2002
Vehicle OEM No.	3794755
Turbo Model.	HY35W
Turbo OEM No.	3592836 / 3596392 3800973 / 4089642
Displacement	5.9L Diesel

● FORD



👍 9B03-041-009TVR

Description.	Ford F-150 2015-2017 Twin Turbo—Right Side
Vehicle OEM No.	FL3E-6K682-DE
Turbo Model.	K03
Turbo OEM No.	
Displacement	2.7L Petrol PS : with milled aluminium compressor wheel



👍 9B03-041-010TVL

Description.	Ford F-150 2015-2017 Twin Turbo—Left Side
Vehicle OEM No.	FL3E-6C879-DE
Turbo Model.	K03
Turbo OEM No.	
Displacement	2.7L Petrol PS : with milled aluminium compressor wheel



9B03-041-035TVR

Description.	Ford F-150 2018-2020 Twin Turbo—Right Side
Vehicle OEM No.	JT4E-6K682-AC JT4Z-6K682-B
Turbo Model.	K03
Turbo OEM No.	
Displacement	2.7L Petrol PS : with milled aluminium compressor wheel



9B03-041-036TVL

Description.	Ford F-150 2018-2020 Twin Turbo—Left Side
Vehicle OEM No.	JT4E-6C879-AA JT4Z-6K682-A
Turbo Model.	K03
Turbo OEM No.	
Displacement	2.7L Petrol PS : with milled aluminium compressor wheel

👍 Popular 🔄 Coming soon

👍 Popular 🔄 Coming soon

● FORD



🔥 9B0C-041-002TVR

Description. 2015- FORD SERIES 3.5L V6
Twin Turbo—Right Side

Vehicle OEM No. DL3E-6K682-AF
DL3Z-6K682-B

Turbo Model. KOCG

Turbo OEM No. 5303-970-0470

Displacement 3.5L Petrol
PS : with milled aluminium compressor wheel



🔥 9B0C-041-003TVL

Description. 2013- FORD SERIES 3.5L V6
Twin Turbo—Left Side

Vehicle OEM No. DL3E-6C879-AF
DL3Z-6K682-A

Turbo Model. KOCG

Turbo OEM No. 5303-970-0469

Displacement 3.5L Petrol
PS : with milled aluminium compressor wheel



🔥 9B03-043-033TVR ⇨

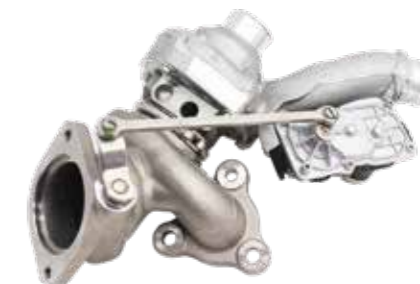
Description. Ford F-150 2021~2022 / Ford Expedition 2022~2023
Lincoln Navigator 2022~2023 / Twin Turbo—Right Side

Vehicle OEM No. ML3Z-6K682-B

Turbo Model. K03

Turbo OEM No. ML3E-6K682-BC

Displacement 3.5L Petrol
PS : with milled aluminium compressor wheel



🔥 9B03-043-034TVL ⇨

Description. Ford F-150 2021~2022 / Ford Expedition 2022~2023
Lincoln Navigator 2022~2023 / Twin Turbo—Left Side

Vehicle OEM No. ML3Z-6K682-A

Turbo Model. K03

Turbo OEM No. ML3E-6C879-BC

Displacement 3.5L Petrol
PS : with milled aluminium compressor wheel



🔥 9B0C-041-004TVR

Description. FORD F-150 2011-2012
Twin Turbo—Right Side

Vehicle OEM No. CL3Z-6K682-D

Turbo Model. KOCG

Turbo OEM No. 179205

Displacement 3.5L Petrol
PS : with milled aluminium compressor wheel



🔥 9B0C-041-005TVL

Description. FORD F-150 2011-2012
Twin Turbo—Left Side

Vehicle OEM No. CL3Z-6K682-C
BL3Z-6K682-C

Turbo Model. KOCG

Turbo OEM No. 179204

Displacement 3.5L Petrol
PS : with milled aluminium compressor wheel



🔥 9B03-043-037TVR ⇨

Description. Ford F-150 2018~2020
Twin Turbo—Right Side

Vehicle OEM No. JL3Z-6K682-B
JL3Z-6K682-D

Turbo Model. K03

Turbo OEM No. JL3E -K682-BF

Displacement 3.5L Petrol
PS : with milled aluminium compressor wheel



🔥 9B03-043-038TVL ⇨

Description. Ford F-150 2018~2020
Twin Turbo—Left Side

Vehicle OEM No. JL7Z-6K682-A

Turbo Model. K03

Turbo OEM No. JL7E-6C879-BF

Displacement 3.5L Petrol
PS : with milled aluminium compressor wheel

🔥 Popular ⇨ Coming soon

🔥 Popular ⇨ Coming soon

● FORD



9B03-043-039TVL

Description.	Ford F-150 2017 Twin Turbo—Left Side
Vehicle OEM No.	HL3Z-6K682-B
Turbo Model.	K03
Turbo OEM No.	HL3E-6C879-AB
Displacement	3.5L Petrol PS : with milled aluminium compressor wheel



9G38-021-012

Description.	1999-2003 FORD F-SERIES 7.3L
Vehicle OEM No.	1831383C92
Turbo Model.	GTP38
Turbo OEM No.	702011-0011 / 702012-0006
Displacement	7.3L Diesel

● GM



9G25-021-100

Description.	GM S10 OM014A 2.5L 2002-
Vehicle OEM No.	79035
Turbo Model.	GT2552
Turbo OEM No.	704090-0001
Displacement	2.5L Diesel



9M35-021-041

Description.	GM Blazer Diesel Industrial S10 4.0L TCA 4 -
Vehicle OEM No.	9.0529.20.1.0068-02
Turbo Model.	TF035HM-12T-4
Turbo OEM No.	49135-06500
Displacement	4.0L Diesel

● GREAT WALL



9B43-032-088T

Description.	Great Wall Haval H5 2.0L 2011-
Vehicle OEM No.	1118100-ED01A
Turbo Model.	BV43
Turbo OEM No.	5303-970-0168
Displacement	2.0L Diesel
PS : with milled aluminium compressor wheel	

● HYUNDAI / KIA



9G15-031-117

Description.	KIA Pride CRDI 1.5L 2005
Vehicle OEM No.	28201-2A400
Turbo Model.	GT1544V
Turbo OEM No.	740611-0002
Displacement	1.5L Diesel



9M03-021-116

Description.	Kia Bongo III D4CB 2.5L 2001-
Vehicle OEM No.	28231-4A800
Turbo Model.	TD03L4
Turbo OEM No.	49590-45607
Displacement	2.5L Diesel



9G17-021-118

Description.	KIA Sotento D4CB 2.5L 2006-2011
Vehicle OEM No.	28200-4A101
Turbo Model.	GT1752S
Turbo OEM No.	733952-0001
Displacement	2.5L Diesel



9G17-021-128

Description.	KIA Pregio D4BH 2.5L 2003-2010
Vehicle OEM No.	28200-42700 28200-42610
Turbo Model.	GT1749S
Turbo OEM No.	715924-0001
Displacement	2.5L Diesel

Popular Coming soon

Popular Coming soon

● ISUZU



9I04-021-099

Description.	Isuzu Trooper 4JB1 2.8L 2003-
Vehicle OEM No.	8973311850 / 1118010-802
Turbo Model.	RHF4
Turbo OEM No.	VB420076-VIDZ
Displacement	2.0L Diesel



9I04-021-126

Description.	Isuzu D-MAX 4JA1 2.5L 2004-
Vehicle OEM No.	8972402101 / 8971856452
Turbo Model.	RHF4H/RHF4
Turbo OEM No.	VC420037-VIDA
Displacement	2.5L Diesel



9I05-021-093

Description.	Isuzu Rodeo 4JB1T 2.8 1998-2004
Vehicle OEM No.	8971397243
Turbo Model.	RHF5
Turbo OEM No.	VIBR
Displacement	2.8L Diesel

● M-BENZ



9B2S-021-112T

Description.	M-BENZ Freightliner Sprinter 2500 2014-2021
Vehicle OEM No.	6510906380
Turbo Model.	R2S KP39+K04
Turbo OEM No.	1000-970-0074
Displacement	2.1L Diesel
	PS : with milled aluminium compressor wheel



9G18-031-131

Description.	M-Benz Sprinter OM611Corazon 2.2L 1999-2006
Vehicle OEM No.	6110960899
Turbo Model.	GT1852V
Turbo OEM No.	709836-0004 / 709836-0003 709836-0001 / 726698-0003 726698-0002 / 726698-0001 778794-5001
Displacement	2.2L Diesel



9G20-021-073

Description.	Mercedes-Benz Sprinter 312 Intercooler MAXION 2.5L 1999-
Vehicle OEM No.	79050
Turbo Model.	GT2052S
Turbo OEM No.	708257-0001
Displacement	2.5L Diesel

Popular Coming soon

Popular Coming soon

● MITSUBISHI



9M35-031-052T

Description. Mitsubishi MQ Triton 4WD 4N15 2.4L 2016-

Vehicle OEM No. 1515A295

Turbo Model. TF035

Turbo OEM No. 49335-01410

Displacement 2.4L Diesel
PS : with milled aluminium compressor wheel



👍 9I04-031-078

Description. Mitsubishi L200 2.5L 4D56 2010-

Vehicle OEM No. 1515A222

Turbo Model. RHV4

Turbo OEM No. V14VAT-S0079B / VT17

Displacement 2.5L Diesel

● NISSAN



9G15-031-064

Description. Renault Master T30dCi M9TD3
Euro5 2.3L 2002-

Vehicle OEM No. 8200994322B

Turbo Model. GTB1549LV

Turbo OEM No. 790179-0002

Displacement 2.3L Diesel



👍 9I04-021-123

Description. Nissan Cab-Star 2.5L YD25DDTI 2006-2011

Vehicle OEM No. 14411-VM01A

Turbo Model. RHF4

Turbo OEM No. VB420119-VN4

Displacement 2.5L Diesel



👍 9M35-031-114

Description. MITSUBISHI L200 4D56 2.5L 2002-

Vehicle OEM No. MR968080

Turbo Model. TF035HL VGT

Turbo OEM No. 49135-02652

Displacement 2.5L Diesel



👍 9M35-010-125

Description. MITSUBISHI L200 2.5L 4D56 1990-

Vehicle OEM No. MR212759

Turbo Model. TF035HM-12T-4

Turbo OEM No. 49135-02110

Displacement 2.5L Diesel



👍 9G20-031-133

Description. Nissan Navara YD25DDTi 2.5L 2005-

Vehicle OEM No. 14411-EB70C

Turbo Model. GTA2056V

Turbo OEM No. 767720-0002 / 769708-5004

Displacement 2.5L Diesel

👍 Popular 📅 Coming soon

👍 Popular 📅 Coming soon

● OPEL



9M02-021-097

Description. Opel Corsa 1.7L Y17D 2000-2010

Vehicle OEM No. 897185-2412
897185-2413

Turbo Model. TD025M-06T-2.3

Turbo OEM No. 49173-06503
49173-06500
49173-06501

Displacement 1.7L Diesel

● RENAULT



9B03-021-130

Description. Renault Movano G9U720 2.5L 2001-

Vehicle OEM No. 8200036999

Turbo Model. K03

Turbo OEM No. 5303-970-0055

Displacement 2.5L Diesel

● SSANGYONG



👍 9G15-031-089

Description.	Ssangyong Actyon C0K D20DT 2.0L 2005-2013
Vehicle OEM No.	A6640900780
Turbo Model.	GTB1549V
Turbo OEM No.	761433-0002
Displacement	2.0L Diesel



9G20-021-047

Description.	Ssangyong Rexton D27DTP 2.7L 2006-2013
Vehicle OEM No.	A6650901780
Turbo Model.	GT2056S
Turbo OEM No.	742289-0005
Displacement	2.7L Diesel

● TOYOTA



👍 9T10-021-127

Description.	Toyota Hilux D Cab 2KD-FTV 2.5L 2001-
Vehicle OEM No.	17201-0L030
Turbo Model.	CT10
Turbo OEM No.	17201-0L030
Displacement	2.5L Diesel

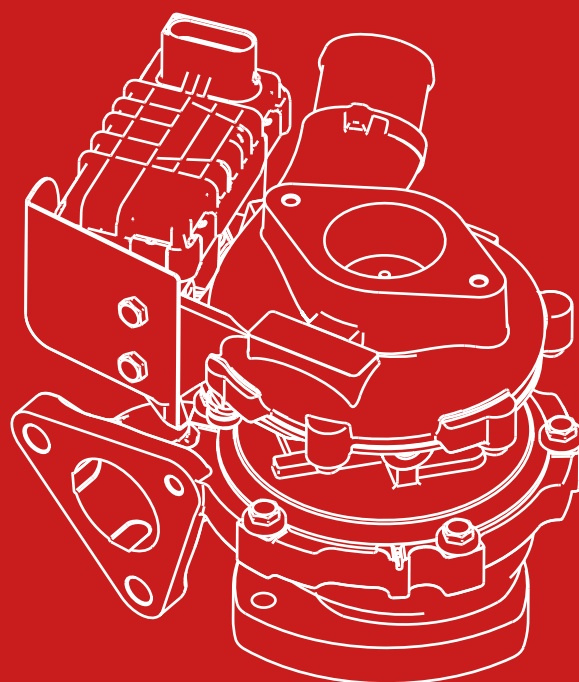


👍 9T16-033-134 📅

Description.	Toyota Hilux D4D 3.0L 2001-2005
Vehicle OEM No.	17201-0L040
Turbo Model.	CT16V
Turbo OEM No.	17201-0L040
Displacement	3.0L Diesel

02.

CV



● CUMMINS



9C03-021-092

Description. CUMMINS DCEC 3.9L With 4B 2004-2011

Vehicle OEM No. 4040382 / 4040383
4040759 / 2843727

Turbo Model. HX30W

Turbo OEM No. 4040353 / 4033321

Displacement 3.9L Diesel



9C04-021-063

Description. CUMMINS TRUCK 6CT 2004-

Vehicle OEM No. 3597336

Turbo Model. HX40W

Turbo OEM No. 4038003 / 4038004

Displacement 8.3L Diesel

● CUMMINS DODGE



9C02-021-021T

Description. 2006- CUMMINS ISDE4

Vehicle OEM No. 4956031 / 4043978

Turbo Model. HE221W

Turbo OEM No. 2835143 / 4033347 / 4043978

Displacement 4.5L Diesel
PS : with milled aluminium compressor wheel



9C03-021-018

Description. 1996- CUMMINS 6BTAA

Vehicle OEM No. 3538881

Turbo Model. HX35W

Turbo OEM No. 3538881

Displacement 6.0L Diesel



9C05-021-022

Description. CUMMINS TRUCK WITH ISM,ISME 1998-2012

Vehicle OEM No. 4046030/3592779

Turbo Model. HX55W

Turbo OEM No. 3592778/4033817

Displacement 10.8L Diesel



9C05-010-068

Description. CUMMINS Truck With ISME 2007-

Vehicle OEM No. 4033813H

Turbo Model. HX55

Turbo OEM No. 3590044

Displacement 11.0L Diesel



9C03-021-017

Description. 2008- CUMMINS ISDE6,6ISB

Vehicle OEM No. 2834176 / 2837188 / 4043982

Turbo Model. HE351W

Turbo OEM No. 4043980 / 4033409

Displacement 6.0L Diesel

Popular Coming soon

Popular Coming soon

● DAF



9G42-021-081

Description.	DAF XF355M-F95 1997-2001
Vehicle OEM No.	1319281
Turbo Model.	GT4294S
Turbo OEM No.	452235-0001
Displacement	12.6L Diesel



9B3G-021-101TM

Description.	DAF Truck CF85 With MX300 2013-
Vehicle OEM No.	1897353
Turbo Model.	B3G
Turbo OEM No.	1387-970-0063
Displacement	13.0L Diesel
PS : with milled aluminium compressor wheel	

● DETROIT



👍 9G42-021-014

Description.	1994-2006 DETROIT SERIES 60 TRUCK
Vehicle OEM No.	23528059 / 1080016R / 23522190 23528059 / 23534440 / AP80051
Turbo Model.	GTA4202BNS
Turbo OEM No.	714792-0002
Displacement	12.7L Diesel



👍 9G42-021-006

Description.	1998-2008 DETROIT SERIES 60 TRUCK
Vehicle OEM No.	23528065
Turbo Model.	GTA4294
Turbo OEM No.	714788-0001
Displacement	12.7L Diesel



9B3G-021-101TMG

Description.	DAF Truck CF85 With MX300 2013-
Vehicle OEM No.	1897353
Turbo Model.	B3G
Turbo OEM No.	1387-970-0063
Displacement	13.0L Diesel

PS: with milled aluminium compressor wheel & turbine housing with insulation layer



👍 9S04-010-007

Description.	2000- DETROIT DDC Series 60 TRUCK
Vehicle OEM No.	23518588 / 23518597 23523197 / 2585838C91
Turbo Model.	S400S062
Turbo OEM No.	171702
Displacement	12.7L Diesel



👍 9B31-021-019

Description.	1998- DETROIT SERIES 60 TRUCK
Vehicle OEM No.	23522188 / 23522189 / 23528058 23528059 / 23528064 / 23528065 23528066 / 23528069
Turbo Model.	K31
Turbo OEM No.	172743
Displacement	12.7L Diesel

👍 Popular 📅 Coming soon

👍 Popular 📅 Coming soon

● DETROIT



9G05-010-023

Description. 1992-2007 DETROIT SERIES 60 TRUCK

Vehicle OEM No. 23515635

Turbo Model. TMF5502

Turbo OEM No. 466713-0001

Displacement 12.7L Diesel



9G45-031-020T

Description. 2007- DETROIT SERIES 60

Vehicle OEM No. 23534361 / R23534361
23533364 / 23534356

Turbo Model. GTA4502V

Turbo OEM No. 758204-0007

Displacement 14.0L Diesel
PS : with milled aluminium compressor wheel

● FIAT IVECO



9B02-021-043

Description. IVECO Eurocargo IV F4AFE611A
6.7L 2013- NEF6 2016-

Vehicle OEM No. 5801964527

Turbo Model. B2UG

Turbo OEM No. 1270-970-0229

Displacement 6.7L Diesel

● FORD NAVISTAR



9G37-010-015

Description.	NAVISTER INTERNATIONAL TRUCK WITH DT466 1993-
Vehicle OEM No.	1826344C93
Turbo Model.	GTA3782
Turbo OEM No.	751400-0001
Displacement	7.6L Diesel



9G37-021-016

Description.	NAVISTER INTERNATIONAL TRUCK WITH DT466 2003-
Vehicle OEM No.	1830497C93
Turbo Model.	GTA3782D
Turbo OEM No.	751361-0001 / 466743-0042 729161-0015 / 704194-0015 179077
Displacement	7.6L Diesel



9G37-021-027

Description.	NAVISTER INTERNATIONAL TRUCK WITH DT466 2002-
Vehicle OEM No.	F4307154R1 / 1841838C91 1830493C93
Turbo Model.	GTA3776
Turbo OEM No.	729161-0001 / 729161-0005
Displacement	7.6L Diesel



9G37-021-028

Description.	NAVISTER INTERNATIONAL TRUCK WITH DT466E 1993-
Vehicle OEM No.	1830735C92
Turbo Model.	GT3782
Turbo OEM No.	466803-0015
Displacement	7.6L Diesel



9S01-021-024T

Description.	NAVISTER INTERNATIONAL TRUCK WITH DT466 2010-
Vehicle OEM No.	1891392C92 / 1893192C93 1899898C92
Turbo Model.	R2S B1UG (HP)
Turbo OEM No.	1155-990-0047 / 179360 179477 / 179299 / 179475
Displacement	7.6L Diesel
PS : with milled aluminium compressor wheel	



9G37-021-026

Description.	NAVISTER INTERNATIONAL TRUCK WITH DT466 I530E 1995-
Vehicle OEM No.	F4307155R1 / 1830494C92
Turbo Model.	GT3776
Turbo OEM No.	179077 / 704194-0016
Displacement	7.6L Diesel

Popular Coming soon

● FORD NAVISTAR

Popular Coming soon

● GAZ



9C03-021-087

Description. Kamaz 4308 ISBE5 Euro4 2009-

Vehicle OEM No. 4956077 / 4047758
2839319

Turbo Model. HE351W

Turbo OEM No. 4047757 / 4033002

Displacement 5.9L Diesel



9Z13-021-106T

Description. GAZon-Next (14-) 10t. 53443-20

Vehicle OEM No. 53443.1118010-10

Turbo Model. C13-295-01

Turbo OEM No. C13-295-01

Displacement Diesel
PS : with milled aluminium compressor wheel

● HYUNDAI KIA



9M05-021-042

Description. Hyundai Truck mighty II With
4D34T1 3.9L 2005-

Vehicle OEM No. 28230-45100

Turbo Model. TD05

Turbo OEM No. 49178-03129
49178-03123

Displacement 3.9L Diesel

● KAMAZ



9S02-010-045

Description. KAMAZ Truck 740 820 1999-

Vehicle OEM No.

Turbo Model. S2B

Turbo OEM No. 317809

Displacement Diesel



9S02-010-048

Description. Kamaz Truck 740 11.8L 1994-

Vehicle OEM No.

Turbo Model. S2B

Turbo OEM No. 314448

Displacement 11.8L Diesel

● M-BENZ



9B16-021-086T

Description. M-Benz VARIO With OM 904 4.2L 2006-2013

Vehicle OEM No. 9040969199

Turbo Model. K16

Turbo OEM No. 5316-970-7139

Displacement 4.2L Diesel
PS : with milled aluminium compressor wheel



9B16-010-055

Description. M-Benz Truck With OM904LA-E2 4.3L 2000

Vehicle OEM No. 9040965699

Turbo Model. K16

Turbo OEM No. 5316-970-7029

Displacement 4.3L Diesel



9C04-021-096T

Description. Kamaz DN-0870 Cummins V8 Euro4 2012-

Vehicle OEM No. '45104111810690

Turbo Model. HE400G

Turbo OEM No. 3787729 / 3785076
3786237 / 13809700027(S300G)

Displacement 11.8L Diesel
PS : with milled aluminium compressor wheel



👍 9B16-021-109T

Description. M-Benz Truck With OM904LA-EPA 4.3L 2001-2006

Vehicle OEM No. Bus, CW Titanium

Turbo Model. K16

Turbo OEM No. 5316-970-7119

Displacement 4.3L Diesel
PS : with milled aluminium compressor wheel



9B24-021-082T

Description. M-Benz Atego II With OM924LA-E3 4.8L 2004-

Vehicle OEM No. 9240962199

Turbo Model. K24

Turbo OEM No. 5324-970-7118

Displacement 4.8L Diesel
PS : with milled aluminium compressor wheel

👍 Popular 📅 Coming soon

👍 Popular 📅 Coming soon

● M-BENZ



9B24-021-094T

Description. M-Benz Bus With OM924LA 4.8L 2006-

Vehicle OEM No. 9240960999 / 9240962299
9240961799 / 9240963299
9240960899

Turbo Model. K24

Turbo OEM No. 5324-970-7107 / 5324-970-7122
5324-970-7120 / 5324-970-7114
5324-970-7106

Displacement 4.8L Diesel
PS : with milled aluminium compressor wheel



9B27-010-135

Description. M-Benz Truck With OM366A 6.0L 1985-2007

Vehicle OEM No. 3660960899

Turbo Model. K27

Turbo OEM No. 5327-970-6441 / 5327-970-6440

Displacement 6.0L Diesel

● M-BENZ



9G35-021-122

Description. M-Benz Truck L1620 OM906 6.4L 2011-

Vehicle OEM No.

Turbo Model. GT3576S

Turbo OEM No. 817210-0001

Displacement 6.4L Diesel



9S04-010-060

Description. M-Benz Truck Travego 400
OM457LA 12.0L 2003-

Vehicle OEM No. 0070961299 / 0070967599
0070967699 / 0080968199

Turbo Model. S400

Turbo OEM No. 317471

Displacement 12.0L Diesel



9B27-010-084T

Description. Freightliner Truck With
OM906LA-E2 6.4L 2007-

Vehicle OEM No. 9060969799

Turbo Model. K27

Turbo OEM No. 5327-970-7210

Displacement 6.4L Diesel
PS : with milled aluminium compressor wheel



9B27-021-121T

Description. M-Benz Freightliner Atego With
OM906LA-E3 6.4L 2008-

Vehicle OEM No. 9060964699

Turbo Model. K27

Turbo OEM No. 5327-970-7120

Displacement 6.4L Diesel
PS : with milled aluminium compressor wheel



9S04-010-072

Description. M-Benz Actros Truck OM501LA 12.0L 1997-

Vehicle OEM No. 60967399

Turbo Model. S400

Turbo OEM No. 316428 / 316756

Displacement 12.0L Diesel



9S04-010-107

Description. M-Benz Actros Truck With
OM501LA 12.0L 1997-2011

Vehicle OEM No. A0060966699

Turbo Model. S400

Turbo OEM No. 316429 / 316699

Displacement 12.0L Diesel

Popular Coming soon

Popular Coming soon

● M-BENZ



9B31-010-070

Description.	M-Benz Actros Truck OM501LA-E3 12.0L 2004-
Vehicle OEM No.	90961699
Turbo Model.	K31
Turbo OEM No.	5331-970-7137
Displacement	12.0L Diesel



9B31-010-070T

Description.	M-Benz Actros Truck OM501LA-E3 12.0L 2004-
Vehicle OEM No.	90961699
Turbo Model.	K31
Turbo OEM No.	5331-970-7137
Displacement	12.0L Diesel
PS : with milled aluminium compressor wheel	

● M-BENZ



9S04-010-108

Description.	M-Benz Truck Axor With OM457LA 12.0L 2001-
Vehicle OEM No.	80965099
Turbo Model.	S410
Turbo OEM No.	318960 / 318932
Displacement	12.0L Diesel



9B27-010-110

Description.	M-Benz Truck 14.6L With OM442LA-E2 1996-
Vehicle OEM No.	50969399
Turbo Model.	K27
Turbo OEM No.	5327-970-6507
Displacement	14.6L Diesel



9B31-021-120T

Description.	M-Benz Actros Truck E4 12.0L With OM501LA 2009-
Vehicle OEM No.	0100961799 / 0090960199
Turbo Model.	K31
Turbo OEM No.	5331-970-6906 5331-970-6911
Displacement	12.0L Diesel
PS : with milled aluminium compressor wheel	



9S04-021-132T

Description.	M-Benz Truck With OM457LA-E4 12.0L 2009-
Vehicle OEM No.	AXOR
Turbo Model.	S410G
Turbo OEM No.	1487-970-0015
Displacement	12.0L Diesel
PS : with milled aluminium compressor wheel	



9B27-010-111

Description.	M-Benz Truck With OM442LA-E2 14.6L 1987-2002
Vehicle OEM No.	30965399
Turbo Model.	K27
Turbo OEM No.	5327-970-6206
Displacement	14.6L Diesel



9B27-010-059

Description.	M-Benz Actros OM502LA-E3 16.0L 2007-
Vehicle OEM No.	0090968699 0090968799
Turbo Model.	K27
Turbo OEM No.	5327-970-6533
Displacement	16.0L Diesel

Popular Coming soon

Popular Coming soon

● M-BENZ



9B27-010-059T

Description. M-Benz Actros OM502LA-E3 16.0L 2007-

Vehicle OEM No. 0090968699
0090968799

Turbo Model. K27

Turbo OEM No. 5327-970-6533

Displacement 16.0L Diesel
PS : with milled aluminium compressor wheel

● MAN



9B29-010-066T

Description. MAN Truck TGA D 2676 2005-

Vehicle OEM No. 51.09100-7750 / 51.09100-7707
51.09100-7923 / 51.09101-7023

Turbo Model. K29

Turbo OEM No. 5329-970-7129

Displacement Diesel
PS : with milled aluminium compressor wheel



9C05-010-077

Description. MAN Truck F2000 D2866LF14 1994-

Vehicle OEM No. 51.09100-7429

Turbo Model. HX50

Turbo OEM No. 4033300H / 4027733 / 317623

Displacement Diesel



9C04-021-085

Description. MAN Truck With D0836LF03 6.9L 2001-

Vehicle OEM No. 51-09100-7598

Turbo Model. HX40W

Turbo OEM No. 3597501

Displacement 6.9L Diesel



9C04-010-056

Description. MAN Tga Panther With D2066 10.5L 2004-

Vehicle OEM No. 51.09100-7630
3599883
4033134H

Turbo Model. HX40

Turbo OEM No. 4038409
4033134

Displacement 10.5L Diesel

Popular Coming soon

Popular Coming soon

● MAN



9B29-010-119T

Description. MAN Truck D2066LF 10.9L 2010-

Vehicle OEM No. 51.09101-7026
51.09100-7926

Turbo Model. K29

Turbo OEM No. 5329-970-7132
5329-970-7123

Displacement 10.9L Diesel
PS : with milled aluminium compressor wheel



9B31-010-067T

Description. MAN Truck TGA460 12.0 D2866LF25 2007-

Vehicle OEM No. 51.09100-7768

Turbo Model. K31

Turbo OEM No. 5331-970-7206

Displacement 12.0L Diesel
PS : with milled aluminium compressor wheel



9B31-021-053

Description. MAN D2876 LF13 12.8L 2006-

Vehicle OEM No. 51.09100-7767 / 51.09100-7572
51.09100-9572 / 51.09100-9767

Turbo Model. K31

Turbo OEM No. 5331-970-7508
5331-970-7501

Displacement 12.8L Diesel



9B31-021-053T

Description. MAN D2876 LF13 12.8L 2006-

Vehicle OEM No. 51.09100-7767 / 51.09100-7572
51.09100-9572 / 51.09100-9767

Turbo Model. K31

Turbo OEM No. 5331-970-7508
5331-970-7501

Displacement 12.8L Diesel
PS : with milled aluminium compressor wheel



9B31-010-076T

Description. MAN Bus With D2866LOH 12.0L 2007-

Vehicle OEM No. 51.09100.7764

Turbo Model. K31

Turbo OEM No. 5331-970-6910

Displacement 12.0L Diesel
PS : with milled aluminium compressor wheel



9B29-010-124T

Description. MAN Truck With D2866LF Euro5 12.0L 2013-

Vehicle OEM No. 5109101-7024

Turbo Model. K29

Turbo OEM No. 5329-970-7130
5329-970-7113
5329-970-7121

Displacement 12.0L Diesel
PS : with milled aluminium compressor wheel



9B31-010-095T

Description. MAN TruckWith D2876LF 13.0L 2015

Vehicle OEM No. 51.09100.7742

Turbo Model. K31

Turbo OEM No. 5331-970-7507
5331-970-7524

Displacement 13.0L Diesel
PS : with milled aluminium compressor wheel

Popular Coming soon

Popular Coming soon

● RENAULT



9S03-010-069

Description. Renault Premium H100 MIDR062356 1995-

Vehicle OEM No. 5010330290
5010542005

Turbo Model. S300

Turbo OEM No. 315429 / 315413 / 318525

Displacement Diesel



9S02-010-061

Description. Renault Truck MIDR060226-AC63
Euro 3 6.2L 2000-2005

Vehicle OEM No. 5010450477
7485003740

Turbo Model. S200

Turbo OEM No. 318168

Displacement 6.2L Diesel



9S04-010-075

Description. Renault MIDR624.65 2002-

Vehicle OEM No. 5010437727

Turbo Model. S400

Turbo OEM No. 319080 / 319087

Displacement Diesel



9S04-010-079

Description. Renault Premium 11.2L MIDR062356 C63 2000-

Vehicle OEM No. 5010412597
5001858481

Turbo Model. S400

Turbo OEM No. 317755 / 318294 / 317803

Displacement 11.2L Diesel



9S04-010-046

Description. Renault Truck Euro 3 Ke 11.1L 2000-2006

Vehicle OEM No. 5001861307
5010477318
5010477319

Turbo Model. S400

Turbo OEM No. 318295

Displacement 11.1L Diesel



9S03-010-071

Description. Renault Truck 11.2L MIDR062356B41 1997-

Vehicle OEM No. 5010412248

Turbo Model. S300

Turbo OEM No. 316637
316752

Displacement 11.2L Diesel

Popular Coming soon

Popular Coming soon

● SCANIA



9G42-010-057

Description. Scania Truck DSC1201 11.7L 1996-2004

Vehicle OEM No. 1412299

Turbo Model. GT4288

Turbo OEM No. 703072-0003

Displacement 11.7L Diesel



9C05-010-105

Description. Scania Truck 12.0 With DC12 1999-

Vehicle OEM No. 1538372 / 1538373

Turbo Model. HX55

Turbo OEM No. 4038613D / 4038616D
4038617 / 4031122

Displacement 12.0L Diesel



9G42-021-115T

Description. Scania Truck 12.0 With DC13 Euro5 12.0L 2011-

Vehicle OEM No. 2057668

Turbo Model. GTC4294BNS

Turbo OEM No. 779839-0025
779839-0045

Displacement 12.0L Diesel
PS : with milled aluminium compressor wheel



9C05-010-105T

Description. Scania Truck 12.0 With DC12 1999-

Vehicle OEM No. 1538372 / 1538373

Turbo Model. HX55

Turbo OEM No. 4038613D / 4038616D
4038617 / 4031122

Displacement 12.0L Diesel
PS : with milled aluminium compressor wheel



9G45-021-103T

Description. Scania Truck 12.7L With DC13 2013-

Vehicle OEM No. 2933597 / 2371648 / 2199316
2275487 / 2328179 / 2385226
576131 / 576190

Turbo Model. GTC4594SBN

Turbo OEM No. 852915-5007S
852915-0003
852915-0001

Displacement 12.7L Diesel
PS : with milled aluminium compressor wheel

Popular Coming soon

Popular Coming soon

● VOLVO



9G04-010-058

Description. Volvo N10 260 With TD101G 9.6L 1980-1989

Vehicle OEM No. 1545098

Turbo Model. TA45

Turbo OEM No. 465922-0012

Displacement 9.6L Diesel



9G42-010-051

Description. Volvo Truck With D10B 10.0L 1988-1990

Vehicle OEM No. 11033937

Turbo Model. GT4288

Turbo OEM No. 452174-0010

Displacement 10.0L Diesel



9C05-010-102

Description. VOLVO FH With D12C 12 1998-2001

Vehicle OEM No. 8113407 / 3165219
3169592 / 20516531

Turbo Model. HX55

Turbo OEM No. 3591077 / 3591078

Displacement 12.0L Diesel



9C05-010-102T

Description. VOLVO FH With D12C 12 1998-2001

Vehicle OEM No. 8113407 / 3165219
3169592 / 20516531

Turbo Model. HX55

Turbo OEM No. 3591077/3591078

Displacement 12.0L Diesel
PS : with milled aluminium compressor wheel



9C05-021-080

Description. VOLVO With MD11 10.8L 2013-

Vehicle OEM No. 21316565

Turbo Model. HE500WG

Turbo OEM No. 5501948

Displacement 10.8L Diesel



9C05-010-054T

Description. VOLVO Truck MD13 13.0L 2005-

Vehicle OEM No. 5452297

Turbo Model. HE500FG

Turbo OEM No. 4031170H

Displacement 13.0L Diesel
PS : with milled aluminium compressor wheel



9C05-010-104T

Description. VOLVO FH With MD13 Euro3 12.8L 2005-

Vehicle OEM No. 2085765 / 74043163

Turbo Model. HX55

Turbo OEM No. 4043161 / 3790878

Displacement 12.8L Diesel
PS : with milled aluminium compressor wheel

Popular Coming soon

Popular Coming soon

● **VW**



9G20-021-050

Description. VW 8.150E Delivery Truck 4.08TCE 3.0L 2008-

Vehicle OEM No. '90529201012102

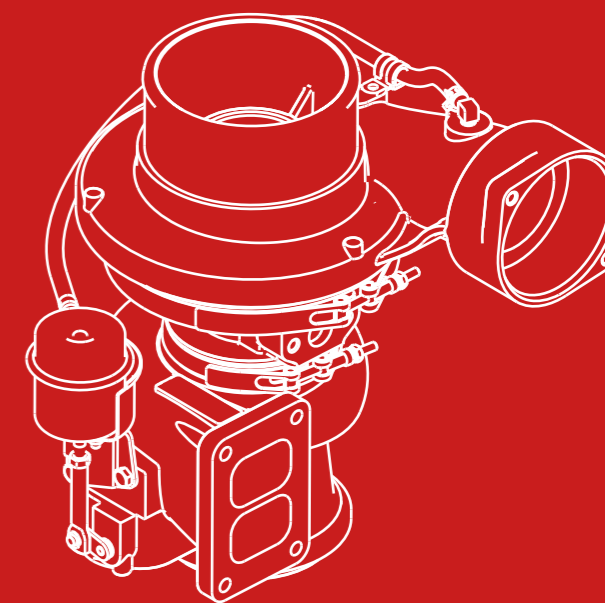
Turbo Model. GT2056

Turbo OEM No. 765326-0002

Displacement 3.0L Diesel

03.

OFF HIGHWAY



🔗 Popular 📅 Coming soon

● CATERPILLAR



9M06-010-031

Description. CATERPILLAR EARTH MOVING WITH 3066/3066T/C6.4/S6K-DT/S6K-T Engine

Vehicle OEM No. 517585

Turbo Model. TE06H

Turbo OEM No. 49179-02230

Displacement 6.4L Diesel



9S02-021-025

Description. CATERPILLAR TRUCK WITH C7 2003-

Vehicle OEM No. 237-5270 / 237-5272 / 10R-1795
237-5271 / 237-5254 / 237-5250
237-5252 / 237-5253 / 237-5251
237-5255 / 238-5057

Turbo Model. S200AG

Turbo OEM No. 178482 / 174201 / 174202
174200 / 174193 / 174194
174195 / 174196 / 174197
174198 / 174235

Displacement 7.0L Diesel



9S03-010-049

Description. CATERPILLA With 3306,D333C 10.5L 1972-

Vehicle OEM No. 4N8969 / 172493
0R5809

Turbo Model. 3LM

Turbo OEM No. 159623

Displacement 10.5L Diesel



9G04-010-032

Description. CATERPILLAR EARTH MOVING WITH 3304 1978-

Vehicle OEM No. 4N6859 / 0R5799
1P9136 / 4N9714

Turbo Model. T04B91

Turbo OEM No. 409410-0002 / 409410-0003
312749(3LM)

Displacement 7.0L Diesel



9S04-021-029

Description. CATERPILLAR TRUCK,TRACTOR WITH 3406E, 3406C, C16/C15 1994-

Vehicle OEM No. 167-9271 / 196-5951
0R-7310 / 0R-7923

Turbo Model. S410G

Turbo OEM No. 177148 / 170354 / 704604-0007
466445-0018 / 471142-0005

Displacement 14.6L Diesel

Popular Coming soon

Popular Coming soon

● HITACHI



9I05-010-065

Description. Isuzu Truck 130 4JJ1X 3.0L 2007-

Vehicle OEM No. VA430101 / VB430101
VC430101 / VD430101

Turbo Model. RHF5

Turbo OEM No. 8981851941 / 8980198930
8981851940

Displacement 3.0L Diesel



9I05-010-074

Description. Hitachi Sumitomo SH200-5 4HK1 5.2L

Vehicle OEM No. 8980302170

Turbo Model. RHF55

Turbo OEM No. VC440051-CIFK

Displacement 5.2L Diesel

● JOHN DEERE



9S02-010-030

Description. JOHN DEERE INDUSTRIAL GEN SET 2000-

Vehicle OEM No. RE503097 / RE523366
RE509818 / RE508877
RE59379

Turbo Model. S2A

Turbo OEM No. 318615 / 174735 / 318570
418570 / 399-0023-112
471049-0004

Displacement 4.5L Diesel



9I05-010-091

Description. Hitachi Zaxis 200-3 5.2L 4HK1TC

Vehicle OEM No. 8973628390

Turbo Model. RHF55

Turbo OEM No. VB440031/VA440031

Displacement 5.2L Diesel



9M08-010-040T

Description. HITACHI 6WG1X 15.7L 2005-

Vehicle OEM No. 8981922133

Turbo Model. TD08H-31M

Turbo OEM No. 49188-01840

Displacement 15.7L Diesel
PS : with milled aluminium compressor wheel

Popular Coming soon

Popular Coming soon

● KOMATSU



9C03-021-098

Description. Komatsu PC220-8 With QSB 2004-

Vehicle OEM No. 6754-81-8120/6754-81-8190

Turbo Model. HX35W

Turbo OEM No. 4038597 / 4955156
4044890 / 4038209
4042667

Displacement Diesel



9C03-010-090

Description. Komatsu PC200-8 With QSB 6.7L 2004-

Vehicle OEM No. 6754-81-8090

Turbo Model. HX35

Turbo OEM No. 4037469/4955155

Displacement 6.7L Diesel

● M-BENZ



9B16-021-044T

Description. M-Benz Atego OM904LA-E3 4.3L 2001-2005

Vehicle OEM No. 9040967399

Turbo Model. K16

Turbo OEM No. 5316-970-7158

Displacement 4.3L Diesel
PS : with milled aluminium compressor wheel



9B16-021-044TA

Description. M-Benz Atego OM904LA-E3 4.3L 2001-2005

Vehicle OEM No. 9040967399

Turbo Model. K16

Turbo OEM No. 5316-970-7158

Displacement 4.3L Diesel
PS : with titanium alloy compressor wheel



9C04-021-062

Description. Cummins PC300 With QSL 8.9L 2004-

Vehicle OEM No. 6745818110 / 6745818040
6745818190

Turbo Model. HX40W

Turbo OEM No. 4089919/4039140

Displacement 8.9L Diesel

Popular Coming soon

Popular Coming soon

● PERKINS



9G22-021-113

Description. Perkins JCB loader With Dieselmax 4.4 2006-

Vehicle OEM No. 320/06047

Turbo Model. GT2256S

Turbo OEM No. 762931-0001
762931-5001S

Displacement 4.4L Diesel



9G25-021-122

Description. Perkins 5455 Tractor With T4.40 4.4L 2003-

Vehicle OEM No. 2674A226

Turbo Model. GT2556S

Turbo OEM No. 711736-0026

Displacement 4.4L Diesel

 Popular  Coming soon



54 OFF HIGHWAY