



TURBO CATALOG

PASSENGER VEHICLE
COMMERCIAL VEHICLE
OFF HIGHWAY

Japan Market
June 2025

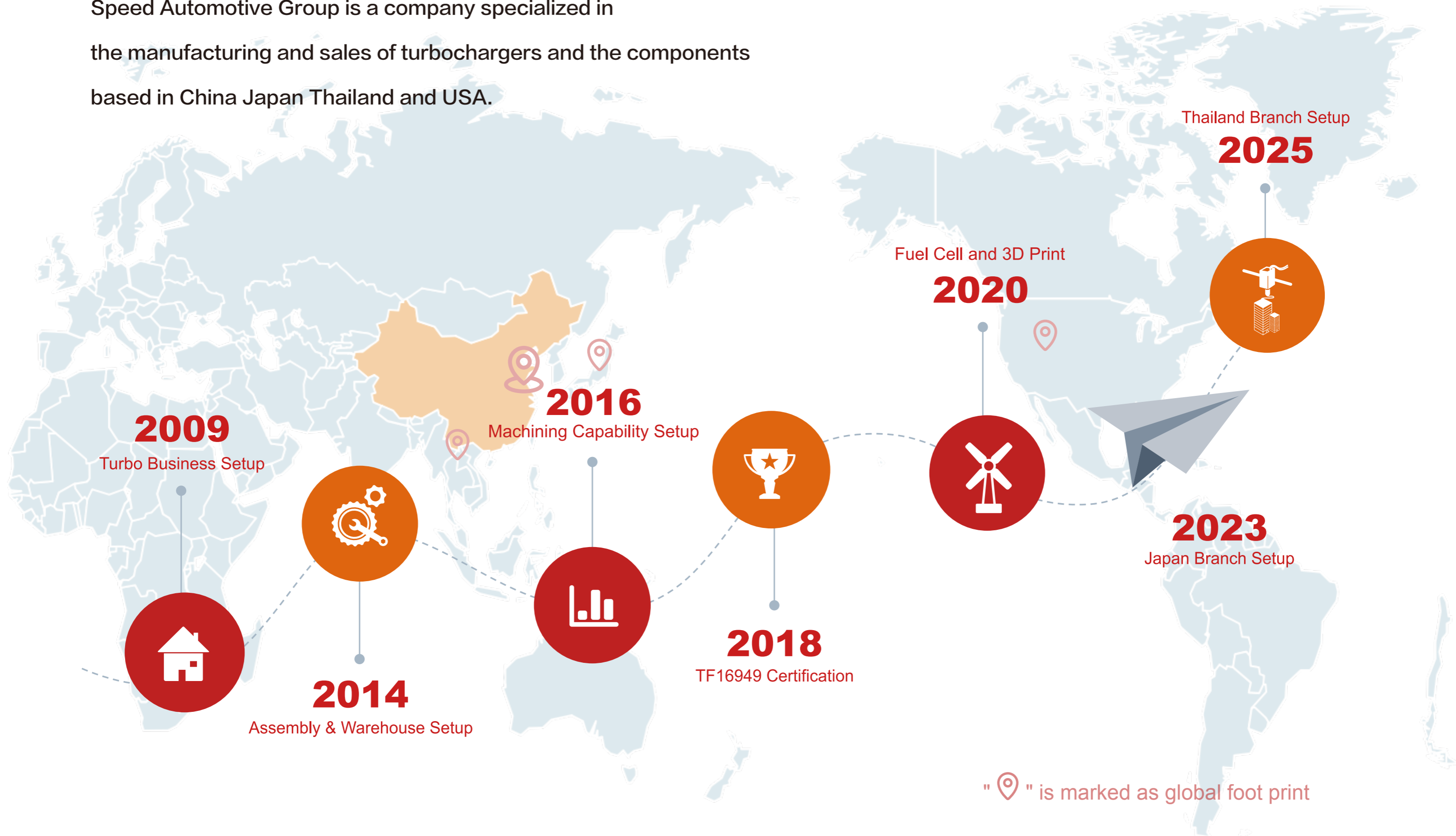


SPEED AUTOMOTIVE (THAILAND) CO., LTD.
SPEED PERFORMANCE & ENGINEERING CORP
WUXI SPEED AUTOMOTIVE & NEW ENERGY TECHNOLOGY CO., LTD.

Email	sales@speedturbo.net	Ins	Speed Turbo Technology
Website	www.speedturbo.net	Linked in	Speed Turbo Technology
Whatsapp	+86-13916379483	Facebook	Speed Turbo Technology

• COMPANY PROFILE

Speed Automotive Group is a company specialized in the manufacturing and sales of turbochargers and the components based in China Japan Thailand and USA.



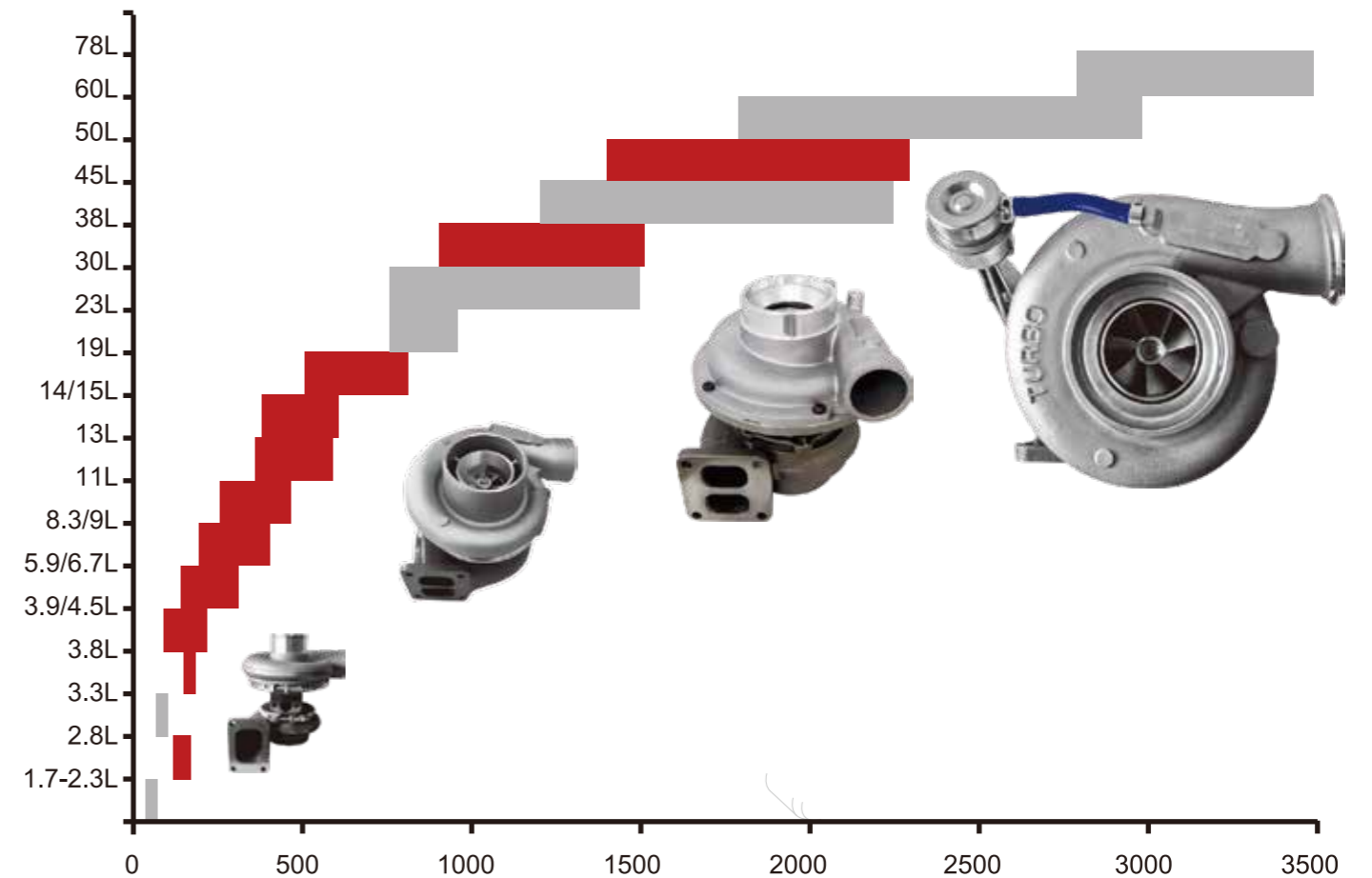
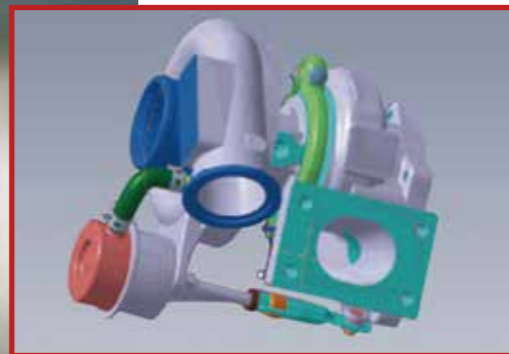
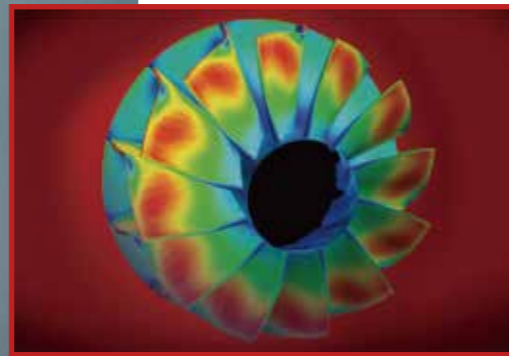
• SUPERIOR TECHNOLOGY



Our technical capacity has covered design, drafting, reverse engineering, product engineering, performance improving, proficient in CATIA, UG and other 3D softwares, modeling for customers quickly.

Through 3D print technology, we can achieve to make tooling rapidly for customers.

Speed Automotive Group has a various range of products, mainly used in diesel and gasoline engines, with 50 to 3,500 horsepower engines to match. Our products are widely used in cars, passenger cars, commercial vehicles, construction machinery, racing and tuning cars, etc., supporting the world famous car factories.



01.

PV

AUDI / VW	/01
BMW	/03
CITROEN PEUGEOT	/06
CUMMINS DODGE	/07
FIAT IVECO	/09
FORD	/10
HYUNDAI / KIA	/12
KIA	/13
LAND ROVER	/14
M-BENZ	/16
MAZDA	/17
MITSUBISHI	/18
NISSAN	/19
OPEL	/20
RENAULT	/21
SUBARU	/22
TOYOTA	/23

02.

CV

CUMMINS DODGE	/24
HINO	/25
HYUNDAI KIA	/26
ISUZU	/27
M-BENZ	/28
UD TRUCKS	/29
福田	/30

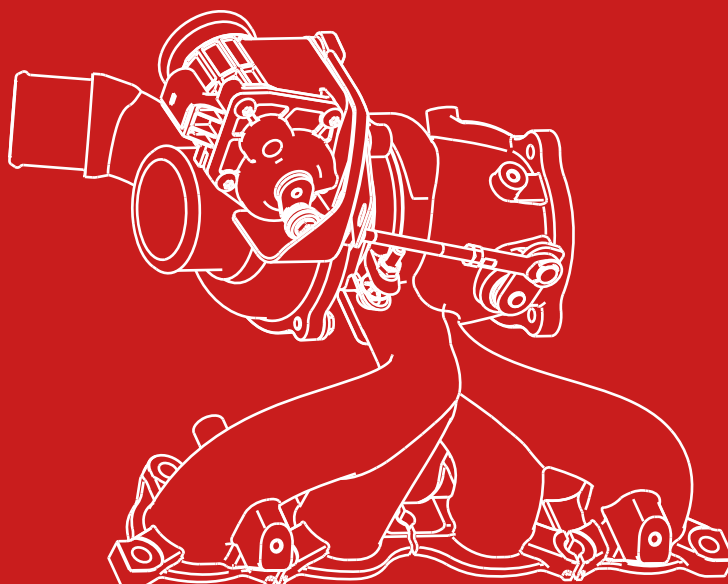
03.

OFF HIGHWAY

CATERPILLAR	/31
HINO	/33
HITACHI KENKI	/34
KOBELCO	/35
KOMATSU	/36
PERKINS	/37
VOLVO	/38
YANMAR	/39

01.

PV



● AUDI / VW



9B03-041-157

Description.	Audi A4 1.8L 1995-2008
Vehicle OEM No.	058145703J
Turbo Model.	K03
Turbo OEM No.	5303-970-0029
Displacement	1.8L Petrol



9B03-041-157B

Description.	Audi A4 1.8L 1995-2008
Vehicle OEM No.	058145703J
Turbo Model.	K03
Turbo OEM No.	5303-970-0029
Displacement	1.8L Petrol PS : with D5S turbine housing

● AUDI / VW



9G17-031-207M

Description.	Audi A3 TDI-4CYL 1.9L ARL 2000-2006
Vehicle OEM No.	038253016G
Turbo Model.	GT1749VB
Turbo OEM No.	721021-0001
Displacement	1.8L Diesel



9G22-031-142

Description.	VW T4 Bus 2.5L AHY 1998-2003
Vehicle OEM No.	074145703E
Turbo Model.	GT2252V
Turbo OEM No.	454192-0005 454192-0001
Displacement	2.5L Diesel



9B03-041-158

Description.	Audi A4 1.8L 1997-2006
Vehicle OEM No.	058145703C
Turbo Model.	K03
Turbo OEM No.	5303-970-0005
Displacement	1.8L Petrol



9B04-041-160

Description.	Audi A4 1.8L 1997-2005
Vehicle OEM No.	
Turbo Model.	K04
Turbo OEM No.	5304-970-0015
Displacement	1.8L Petrol



9M06-032-194

Description.	VW Crafter TDI 2.5L CEBB 2006-2011
Vehicle OEM No.	076145701Q
Turbo Model.	TD04L4FV
Turbo OEM No.	49377-07535
Displacement	2.5L Diesel

Popular Coming soon

Popular Coming soon

● BMW



9B03-041-159

Description. BMW Mini Cooper R55 EP6 1.6L 2006-2013

Vehicle OEM No. 11657565912 / 7595351 / 7595678
756542402 / 75556978004
756542401 / 7647002

Turbo Model. K03

Turbo OEM No. 5303-970-0118
5303-970-0163

Displacement 1.6L Prtrol



9G17-033-175

Description. BMW X3 2.0L M47TU 2006-

Vehicle OEM No. 7794022H07

Turbo Model. GT1752V

Turbo OEM No. 762965-0020
762965-0017
762965-0001

Displacement 2.0L Diesel

● BMW



9M35-033-195F

Description. BMW 320D M47 D20 2.0L 2004-2011

Vehicle OEM No. 7797781

Turbo Model. TF035HL VGT

Turbo OEM No. 49135-05895

Displacement 2.0L Diesel



9M35-033-195TF

Description. BMW 320D M47 D20 2.0L 2004-2011

Vehicle OEM No. 7797781

Turbo Model. TF035HL VGT

Turbo OEM No. 49135-05895

Displacement 2.0L Diesel
PS : with milled aluminium compressor wheel



9G17-033-178

Description. BMW 120D E87 2.0L M47TU 2004

Vehicle OEM No. 77980551

Turbo Model. GTB1752VK

Turbo OEM No. 750952-0001

Displacement 2.0L Diesel



9G22-031-187

Description. BMW 530D 2.9L M57D

Vehicle OEM No. 7789081F

Turbo Model. GT2260V

Turbo OEM No. 725364-0004

Displacement 2.0L Diesel



9M35-033-196F

Description. BMW 320D 2.0L M47 D20 2004-

Vehicle OEM No. 11654716166

Turbo Model. TF035HL VGT

Turbo OEM No. 49135-05671 / 49135-05670
49135-05640 / 49135-05660

Displacement 2.0L Diesel



9M35-033-196TF

Description. BMW 320D 2.0L M47 D20 2004-

Vehicle OEM No. 11654716166

Turbo Model. TF035HL VGT

Turbo OEM No. 49135-05671 / 49135-05670
49135-05640 / 49135-05660

Displacement 2.0L Diesel
PS : with milled aluminium compressor wheel

Popular Coming soon

Popular Coming soon

● BMW



9I04-033-193

Description. BMW X1 N47 D20 C 2.0L 2007

Vehicle OEM No. 851820402 / 851820401 / 851820502
851312202 / 8513123

Turbo Model. RHV4

Turbo OEM No. 9VB01 / V41VEG-SR022B

Displacement 2.0L Diesel

● CITROEN PEUGEOT



9G15-032-170

Description. Citroen C4 HDI 1.6L DV6TED4 1999-

Vehicle OEM No. 9660493580

Turbo Model. GT1544V

Turbo OEM No. 762328-0002

Displacement 1.6L Diesel



9G15-021-166

Description. Citroen C5 HDI 2.0L DW10ATD2S 1999-2005

Vehicle OEM No. 9622526980

Turbo Model. GT1546S

Turbo OEM No. 706977-0001

Displacement 2.0L Diesel



9G15-021-167

Description. Citroen Berlingo 2.0L DW10ATD2S 1999-2005

Vehicle OEM No. 9633614180

Turbo Model. GT1546S

Turbo OEM No. 706976-0002

Displacement 2.0L Diesel



9G15-021-168

Description. Peugeot 806 Hdi 2.0L DW10ATED 2S 1999-2006

Vehicle OEM No. 9634521180

Turbo Model. GT1546S

Turbo OEM No. 706978-0001

Displacement 2.0L Diesel

Popular Coming soon

Popular Coming soon

● CUMMINS DODGE



9C03-021-001

Description.	DODGE RAM 2500 PICKUP 2004-2009 DODGE RAM 3500 PICKUP 2004-2007
Vehicle OEM No.	3538415 / 4089797
Turbo Model.	HE351CW
Turbo OEM No.	4043600
Displacement	5.9L Diesel



9C03-021-008

Description.	DODGE RAM 2500 PICKUP 1999-2002 DODGE RAM 3500 PICKUP 1999-2002
Vehicle OEM No.	3800799 / 3592767
Turbo Model.	HX35W
Turbo OEM No.	3592766 / 3774569
Displacement	5.9L Diesel

● CUMMINS DODGE



9C03-033-140

Description.	Dodge Ram 2500 6.7L ISB 2013-2016
Vehicle OEM No.	3794755
Turbo Model.	HE300VG
Turbo OEM No.	3787604 / 3787605
Displacement	6.7L Diesel



9C03-033-144

Description.	Dodge Ram 2500 6.7L ISB 2007-
Vehicle OEM No.	2834603
Turbo Model.	HE351VE
Turbo OEM No.	4046837 / 4046836
Displacement	6.7L Diesel



9C03-021-013

Description.	DODGE RAM 2500 PICKUP 2000-2002 DODGE RAM 3500 PICKUP 2000-2002
Vehicle OEM No.	3794755
Turbo Model.	HY35W
Turbo OEM No.	3592836 / 3596392 3800973 / 4089642
Displacement	5.9L Diesel



9C03-021-162

Description.	DODGE RAM 2500 Pickup 6BTAA 5.9L 1995-1998
Vehicle OEM No.	3538415 / 3802841
Turbo Model.	HX35W
Turbo OEM No.	3538414 / 3539369 3539370 / 3802992
Displacement	5.9L Diesel

Popular Coming soon

Popular Coming soon

● FIAT IVECO



9M35-021-204

Description.	
Vehicle OEM No.	500321800
Turbo Model.	TF035
Turbo OEM No.	49135-05000
Displacement	Diesel



9G17-031-208

Description.	FIAT Stilo M724.19 1.9L 2003-
Vehicle OEM No.	55191934
Turbo Model.	GT1749V
Turbo OEM No.	716665-0002 716665-0003 716665-0001
Displacement	1.9L Diesel

● FORD



9G15-031-169

Description.	Citroen C5 HDI 1.6L DV6TED4 2006-
Vehicle OEM No.	9663199280
Turbo Model.	GT1544V
Turbo OEM No.	753420-0002 753420-0005 750030-0001
Displacement	1.6L Diesel



9G17-031-205M

Description.	Ford Transit V-184 Duratorq DI 2.0L 2005-
Vehicle OEM No.	3S7Q-6K682-AF/2S7Q-6K682-AG
Turbo Model.	GT1749V
Turbo OEM No.	714467-0014 714467-0008
Displacement	2.0L Diesel



9G17-032-176

Description.	IVECO Ducato Jtd 2.3L F1A Multijet II 2011-
Vehicle OEM No.	5801415501
Turbo Model.	GTB17V
Turbo OEM No.	806850-0003
Displacement	2.3L Diesel



9G17-033-177

Description.	Ford Transit TDCi 2.2L 2011-2014
Vehicle OEM No.	BK3Q-6K682-PC
Turbo Model.	GTB1749V
Turbo OEM No.	787556-0016 / 17
Displacement	2.2L Diesel



9G20-033-185

Description.	Land Rover Defende Duratorq TDCi 2.4L 2007-
Vehicle OEM No.	6C1Q-6K682-EN / 6C1Q-6K682-EK LR006869
Turbo Model.	GT2052V
Turbo OEM No.	752610-0035 752610-0015
Displacement	2.4L Diesel

Popular Coming soon

Popular Coming soon

● FORD



9M35-021-201M

Description.	Ford Transit V184 2.4L 2000-
Vehicle OEM No.	3C1Q-6K682-EB
Turbo Model.	TF035HM-12T-4
Turbo OEM No.	49135-06015
Displacement	2.4L Diesel

● HYUNDAI / KIA



9M35-031-197

Description.	Hyundai Santa Fe CRDI D4EB 2.2L 2006-
Vehicle OEM No.	28231-27810
Turbo Model.	TF035 VGT
Turbo OEM No.	49135-07302 / 49135-07310
Displacement	2.2L Diesel



9M35-031-197T

Description.	Hyundai Santa Fe CRDI D4EB 2.2L 2006-
Vehicle OEM No.	28231-27810
Turbo Model.	TF035 VGT
Turbo OEM No.	49135-07302 / 49135-07310
Displacement	2.2L Diesel
PS : with milled aluminium compressor wheel	



9M04-043-146M

Description.	Hyundai Santa Fe Sport 2.0L Theta 2010-
Vehicle OEM No.	28231-2G410 / 28231-2G420 28231-2G400
Turbo Model.	TD04HL4S
Turbo OEM No.	90142-01030 90142-01031
Displacement	2.0L Petrol



9M35-021-202

Description.	Hyundai Starex 2.5L D4BH 2000-2006
Vehicle OEM No.	28200-4A201
Turbo Model.	TF035HM-12T-4
Turbo OEM No.	49135-04121
Displacement	2.5L Diesel

Popular Coming soon

Popular Coming soon

● KIA



9G17-033-174

Description. KIA Carnival CRDI D4HB 2.2L 2009-2015

Vehicle OEM No. 282312F100

Turbo Model. GTB1752VLK

Turbo OEM No. 780502-0001

Displacement 2.2L Diesel

● LAND ROVER



9G17-033-179VL

Description. LAND ROVER Discovery 4 Lion V6 3.0L 2009-2013
Twin Turbo—Left Side

Vehicle OEM No. AX2Q-6K682-CB

Turbo Model. GTB1749VK

Turbo OEM No. 778400-0005

Displacement 3.0L Diesel



9G14-032-180VR

Description. LAND ROVER Discovery 4 Lion V6 3.0L 2009-2013
Twin Turbo—Right Side

Vehicle OEM No. LR038620
LR021254
LR029236

Turbo Model. GT1444Z

Turbo OEM No. 778401-5011S

Displacement 3.0L Diesel



9G17-033-181VL

Description. LAND ROVER L405 448DT 4.4L 2012-
Twin Turbo—Left Side

Vehicle OEM No. LR038044 / LR049593
CK5Q-6K682-AB

Turbo Model. GTB1756VK

Turbo OEM No. 802733-0004

Displacement 4.4L Diesel



9G15-032-182VR

Description. LAND ROVER L322 ADJV8 4.4 L2010-2012
Twin Turbo—Right Side

Vehicle OEM No. LR044563 / AH4Q6K682FD

Turbo Model. GT1549

Turbo OEM No. 793829-0003

Displacement 4.4L Petrol

Popular Coming soon

Popular Coming soon

● LAND ROVER



9G20-021-184

Description. Land Rover Defender TD5 2.5L 1998-2006

Vehicle OEM No. PMF100460 / PMF100410

Turbo Model. GT2052S

Turbo OEM No. 452239-0005

Displacement 2.5L Diesel



9G17-033-183

Description. Land Rover L322 AJD-V8 4.4L 2010-2012

Vehicle OEM No. AH4Q-6k682-GB

Turbo Model. GTB1756VK

Turbo OEM No. 800089-0003

Displacement 4.4L Diesel

● M-BENZ



9G17-033-172

Description. M-Benz Sprinter 2.2 OM646 2005-

Vehicle OEM No. 6460900480

Turbo Model. GT1749V

Turbo OEM No. 759688-0005
759688-0007

Displacement 2.2L Diesel



9G22-031-188

Description. Dodge Sprinter 2500 OM612 2.7L 2003

Vehicle OEM No. 6120960399

Turbo Model. GT2256V

Turbo OEM No. 709838-0005
709838-0015

Displacement 2.7L



9G22-033-189

Description. M-Benz Sprinter OM647 2.7L 2004

Vehicle OEM No. 6470900280

Turbo Model. GT2256VK

Turbo OEM No. 736088-0003

Displacement 2.7L Diesel



9G20-033-186

Description. M-Benz Sprinter 2500 3.0 OM642Nafta 2007-2009

Vehicle OEM No. 6420901080

Turbo Model. GT2056V

Turbo OEM No. 761154-0003

Displacement 13.0L Diesel

Popular Coming soon

Popular Coming soon

● MAZDA



9I04-031-141

Description. Mazda-3 2.0L RF5C 2002-2007

Vehicle OEM No. RF7J-13700E

Turbo Model. RHV4

Turbo OEM No. VD20012-VJ36

Displacement 2.0L Diesel

● MITSUBISHI



9M35-021-203

Description. MITSUBISHI Pajero 4M40 2.8L 1998-

Vehicle OEM No. ME202578

Turbo Model. TF035HM-12T

Turbo OEM No. 49135-03130

Displacement 2.8L Diesel

● NISSAN



9G15-031-171

Description. Nissan X-Trail 2.0L M9R 2006-2014

Vehicle OEM No. 8200740282E

Turbo Model. GTA1549V

Turbo OEM No. 773087-0003

Displacement 2.0L Diesel



9B40-033-147T

Description. Nissan Caravan 2.5L YD25DDT 2008-

Vehicle OEM No. 14411-3XN1A

Turbo Model. BV40

Turbo OEM No. 5303-970-0373

Displacement 2.5L Diesel
PS : with milled aluminium compressor wheel

● OPEL



9I04-031-153

Description. Opel Vauxhall Astra CDTI 100 1.7L 2007

Vehicle OEM No. 898102-3711 / 898102-3712
898102-3713

Turbo Model. RHV4

Turbo OEM No. VIFC / V41VAY-S0085B

Displacement 1.7L Diesel

●RENAULT



9G17-031-173

Description. RENAULT Laguna II 1.9L dCi F9Q 2005-

Vehicle OEM No. 8200901185A

Turbo Model. GT1746V

Turbo OEM No. 755507-0011
755507-0003

Displacement 1.9L Diesel



9G17-031-206

Description. Renault Laguna II 1.9L 2002

Vehicle OEM No. 8200110519

Turbo Model. GT1749V

Turbo OEM No. 708639-0010
708639-0002

Displacement 1.9L Diesel

● SUBARU



9I05-041-199

Description. SUBARU Impreza EJ25G 2.5L 2008-2014

Vehicle OEM No. 14411AA700

Turbo Model. RHF55

Turbo OEM No. VA440057 / VB440057
VC440057 / VD440057/VF48

Displacement 2.5L Diesel

● TOYOTA



9T16-033-156T

Description.	Toyota Hilux 1GD-FTV 2.8L 2016-
Vehicle OEM No.	21001-S2410
Turbo Model.	CT VNT
Turbo OEM No.	17201-11080
Displacement	2.8L Diesel
PS : with milled aluminium compressor wheel	



9T16-033-134F

Description.	Toyota Hilux D4D 3.0L 2001-2005
Vehicle OEM No.	17201-0L040
Turbo Model.	CT16V
Turbo OEM No.	17201-0L040
Displacement	3.0L Diesel



9T12-033-155F

Description.	Toyota Landcruiser D4D 3.0L 2000-
Vehicle OEM No.	17201-30010 / 17201-30011
Turbo Model.	CT-VNT
Turbo OEM No.	17201-30010 / 17201-30011
Displacement	3.0L Diesel



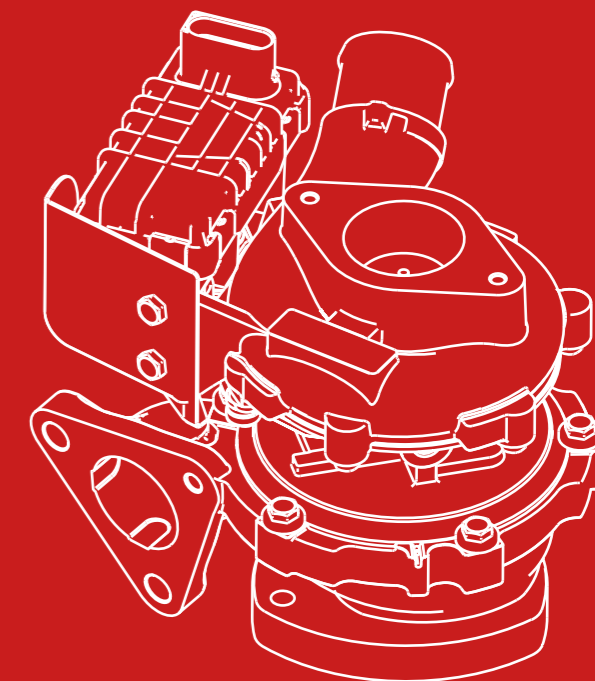
9T12-021-198

Description.	Toyota Landcruiser 1KZ-TE 3.0L 1996
Vehicle OEM No.	17201-67040
Turbo Model.	CT12B
Turbo OEM No.	17201-67010
Displacement	3.0L Diesel

Popular Coming soon

02.

CV



● CUMMINS DODGE



9C02-021-148

Description.	CUMMINS Gaz 33106 Truck ISF 3.8L
Vehicle OEM No.	3787125
Turbo Model.	HE200WG
Turbo OEM No.	3794989 / 3794988
Displacement	3.8L Diesel



9C02-021-149

Description.	Cummins GAZ Truck ISF 3.8L
Vehicle OEM No.	4309427
Turbo Model.	HE200WG
Turbo OEM No.	3773122 / 3773121
Displacement	3.8L Diesel

● HINO



9G35-021-190

Description.	HINO GD With J08C-T1 7.9L 1997-
Vehicle OEM No.	24100-3251C
Turbo Model.	GT3576
Turbo OEM No.	479016-0002
Displacement	7.9L Diesel



9C02-021-021T

Description.	CUMMINS TRUCK WITH QSB,ISBE 2006-
Vehicle OEM No.	4956031 / 4043978
Turbo Model.	HE221W
Turbo OEM No.	2835143 / 4033347 4043978
Displacement	4.5L Diesel
PS : with milled aluminium compressor wheel	



9C03-021-018

Description.	CUMMINS TRUCK WITH 6B,6B5.9,6BTAA 1996-
Vehicle OEM No.	3538881
Turbo Model.	HX35W
Turbo OEM No.	3538881
Displacement	6.0L Diesel

Popular Coming soon

Popular Coming soon

● HYUNDAI / KIA



9M05-021-042

Description. Hyundai Truck mighty II With 4D34TI 3.9L 2005-

Vehicle OEM No. 28230-45100

Turbo Model. TD05

Turbo OEM No. 49178-03129
49178-03123

Displacement 3.9L Diesel

● ISUZU



9105-033-200

Description. ISUZU Truck 4HK1-TCC 2007-

Vehicle OEM No. 8975260061
8980277725
8975260060

Turbo Model. RHF55V

Turbo OEM No. VILG / F5BVED-S0036B

Displacement 5.2L Diesel

● M-BENZ



9B3G-021-161T

Description.	M-Benz Actros OM471 12.8L 2011-
Vehicle OEM No.	4710902680
Turbo Model.	B3G
Turbo OEM No.	1387-970-0026 1387-970-0047
Displacement	12.8L Diesel
	PS : with milled aluminium compressor wheel

● UD TRUCKS



9G35-021-191

Description.	NISSAN B6-60 Ti 6.9L 2004
Vehicle OEM No.	14201-Z5905
Turbo Model.	GT3576DL
Turbo OEM No.	702172-0012
Displacement	6.9L Diesel

● 福田

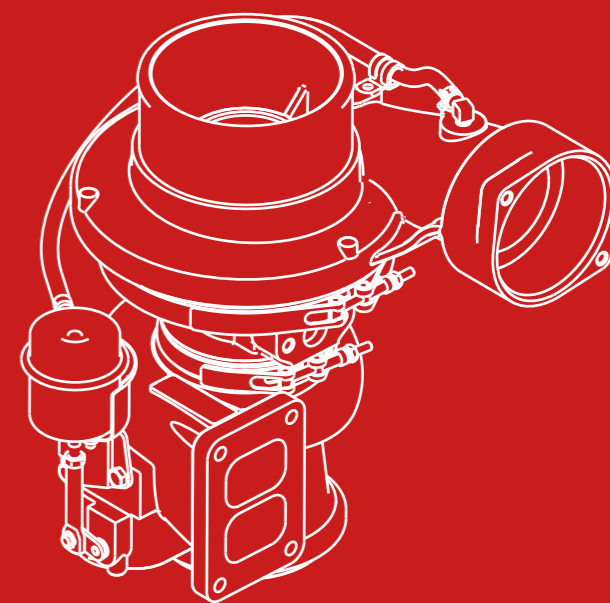


9C02-021-150

Description.	Foton Truck ISF 3.8L
Vehicle OEM No.	
Turbo Model.	HE200WG
Turbo OEM No.	3796165
Displacement	3.8L Diesel

03.

OFF HIGHWAY



Popular Coming soon

● CATERPILLAR



9G04-010-163

Description. CATERPILLAR Earth Moving 5.2L 3204

Vehicle OEM No. 6N8477/0R-5824

Turbo Model. T04B65

Turbo OEM No. 465088-0001

Displacement 5.2L Diesel



9G04-010-164

Description. CATERPILLAR Earth Moving 5.2L 3204

Vehicle OEM No. 8N4774

Turbo Model. T04B65

Turbo OEM No. 465088-0003

Displacement 5.2L Diesel

● CATERPILLAR



👍 9G04-010-032

Description. CATERPILLAR EARTH MOVING WITH 3304 1978-

Vehicle OEM No. 4N6859 / 0R5799
1P9136 / 4N9714

Turbo Model. T04B91

Turbo OEM No. 409410-0002 / 409410-0003
312749(3LM)

Displacement 7.0L Diesel



👍 9M06-010-031

Description. CATERPILLAR EARTH MOVING WITH 3066/3066T/C6.4/S6K-DT/S6K-T Engine

Vehicle OEM No. 5I7585

Turbo Model. TE06H

Turbo OEM No. 49179-02230

Displacement 4.5L Diesel



9M06-010-145

Description. Caterpillar Excavator With S6KT 6.4L 1992-

Vehicle OEM No. 5I5015

Turbo Model. TD06H-14C-14

Turbo OEM No. 49179-00451

Displacement 6.0L Diesel

👍 Popular 📅 Coming soon

👍 Popular 📅 Coming soon

● HINO



9G32-021-138

Description.	HINO FC J05C-TF 5.3L
Vehicle OEM No.	24100-3530A
Turbo Model.	GT3271S
Turbo OEM No.	704409-0001
Displacement	5.3L Diesel

● HITACHI KENKI



9I05-010-065

Description.	Isuzu Truck 130 4JJ1X 3.0L 2007-
Vehicle OEM No.	VA430101 / VB430101 VC430101 / VD430101
Turbo Model.	RHF5
Turbo OEM No.	8981851941 / 8980198930 8981851940
Displacement	3.0L Diesel



9I06-010-143

Description.	Hitachi ZAX330 7.8L 6HK1T
Vehicle OEM No.	114400-3900
Turbo Model.	RHG6
Turbo OEM No.	CIDB-VA570033
Displacement	7.8L Diesel



9I03-010-192

Description.	Hitachi Zaxis 160LC-3 4LE2
Vehicle OEM No.	VB410146 / VA410146 / VC410146 VD410146 / VJ8980928220 VI8980928220R
Turbo Model.	RHF3
Turbo OEM No.	8980928220
Displacement	Diesel

Popular Coming soon

Popular Coming soon

● KOBELCO



9G32-021-152

Description.	Kobelco 7.7L J08 2005-
Vehicle OEM No.	S1760-E0200
Turbo Model.	GT3271LS
Turbo OEM No.	787846-0001
Displacement	7.7L Diesel

● KOMATSU



9G04-010-165

Description.	KOMATSU PC300-5 S6D95L 4.9L
Vehicle OEM No.	6222-81-8210
Turbo Model.	T04E08
Turbo OEM No.	466704-0203
Displacement	4.9L Diesel



9C03-010-151

Description.	Komatsu CD60R With 6BTA 1997-
Vehicle OEM No.	6735-81-8201 / 6735-81-8301 6735-81-8401
Turbo Model.	HX35
Turbo OEM No.	3539697 / 3787001 3539700 / 3804877
Displacement	5.9L Diesel



👍 9C03-010-090

Description.	Komatsu PC200-8 With QSB 6.7L 2004-
Vehicle OEM No.	6754-81-8090
Turbo Model.	HX35
Turbo OEM No.	4037469 4955155
Displacement	6.7L Diesel



👍 9C03-021-098

Description.	Komatsu PC220-8 With QSB 2004-
Vehicle OEM No.	6754-81-8120 6754-81-8190
Turbo Model.	HX35W
Turbo OEM No.	4038597 / 4955156 4044890 / 4038209 4042667
Displacement	Diesel

👍 Popular 📅 Coming soon

👍 Popular 📅 Coming soon

● PERKINS



9G25-021-122

Description. Perkins 5455 Tractor With T4.40 4.4L 2003-

Vehicle OEM No. 2674A226

Turbo Model. GT2556S

Turbo OEM No. 711736-0026

Displacement 4.4L Diesel

● VOLVO



9M06-010-139T

Description. Volvo Evascator 245H D06FR 4.3L

Vehicle OEM No.

Turbo Model. TD06H-14K

Turbo OEM No. 49179-06210

Displacement 4.3L Diesel
PS : with milled aluminium compressor wheel

Popular Coming soon

Popular Coming soon

● YANMAR



9105-021-154

Description. Yanmar CYDX 4TNV98T-VM

Vehicle OEM No. 129908-18010

Turbo Model. RHF5

Turbo OEM No. VA430075 / F51CADS0075

Displacement Diesel

Popular Coming soon



39% OFF HIGHWAY