



SPEED AUTOMOTIVE & NEW ENERGY TECHNOLOGY ADDITIVE MANUFACTURING

WUXI SPEED AUTOMOTIVE & NEW ENERGY TECHNOLOGY CO., LTD.



COMPANY PROFILE

Wuxi Speed Automotive & New Energy Technology Co., LTD. is a professional company specialized in the on-demand manufacturing services, including 3D Printing, CNC machining.



Online instant quoting system

Review the drawing online, optimize the design, fast response within 24 hours



Massive in-house production capabilities

3D metal printer, CNC machines, 5-Axle machining centre, wire cutting machines



Self-developed supply chain management system

No Minimum Order Quantity, deliver within 2 weeks, 100% inspection

TURBOCHARGER COMPONENTS

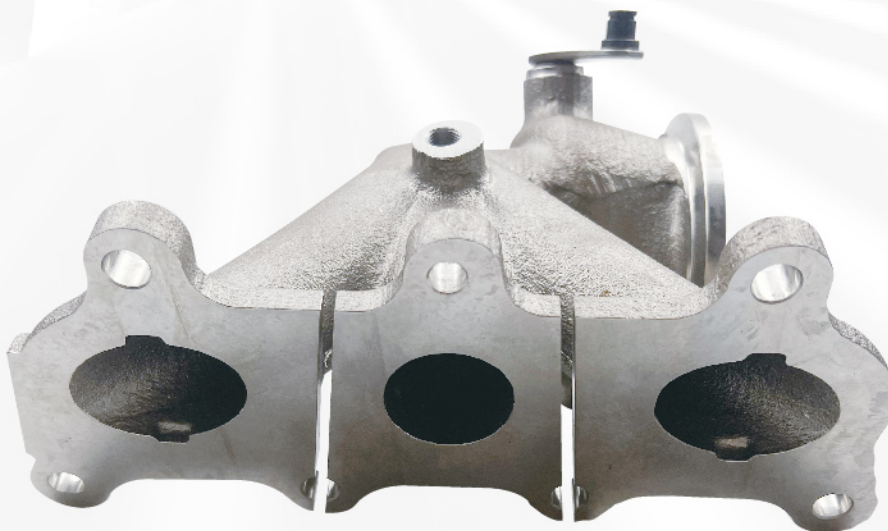
Fast sample verification
High design flexibility



Turbine Housing
Material: Stainless Steel



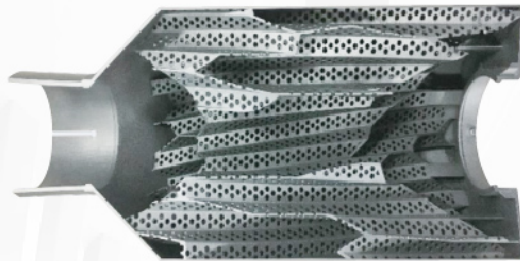
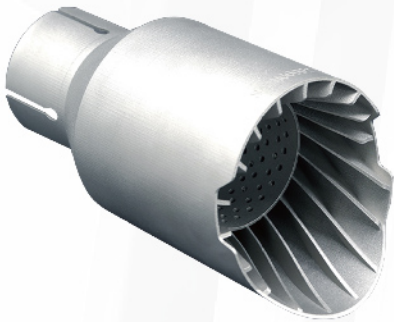
Compressor Housing
Material: Aluminum Alloy



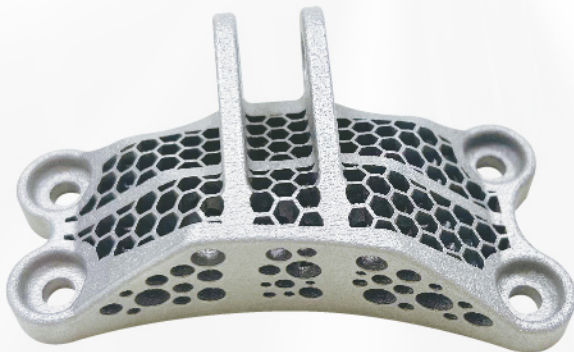
Turbine Housing
Material: Stainless Steel

WEIGHT REDUCTION PRODUCTS

Reduce weight
Improve performance



Exhaust Pipe
Material: Stainless Steel

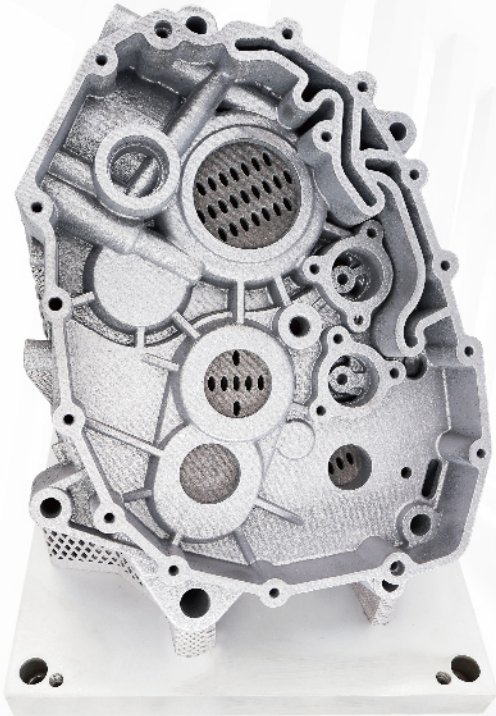


Bracket
Material: Aluminum Alloy

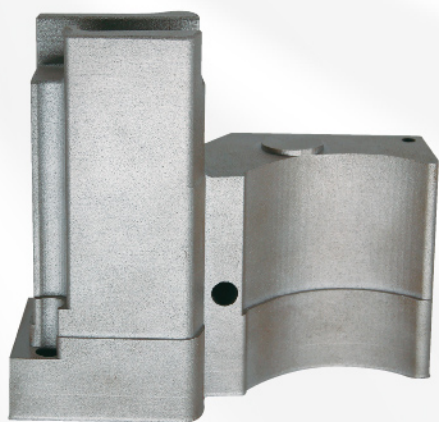
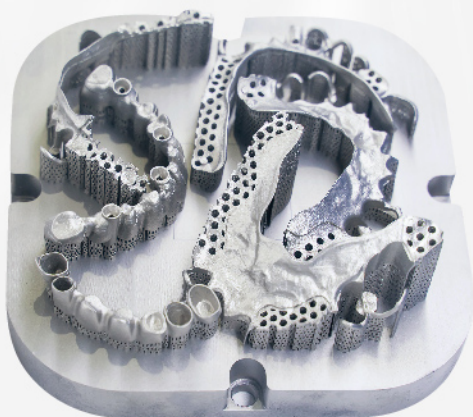
INTEGRATED PRODUCTS

Prevent leakage

Complicated internal structure

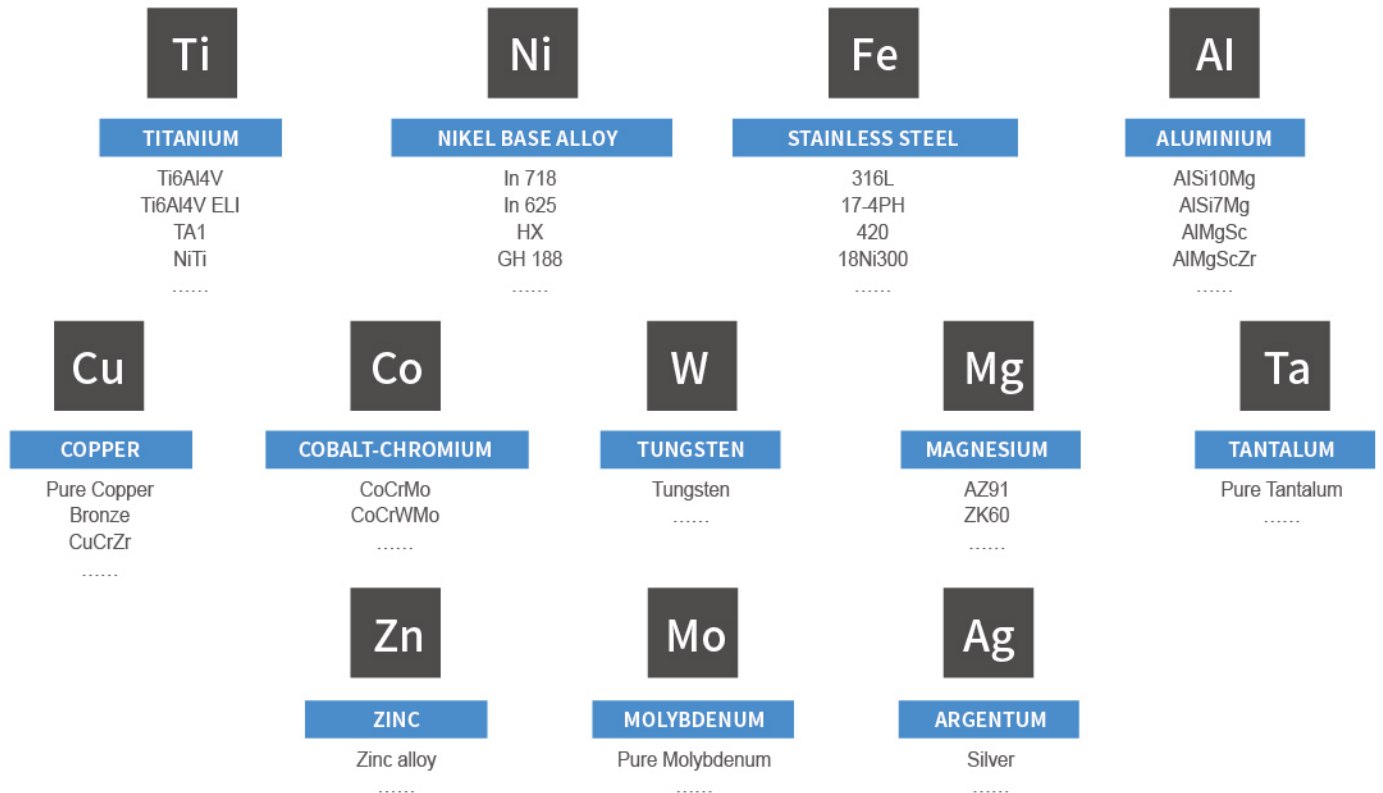


CUSTOMIZED PRODUCTS



ADDITIVE MANUFACTURING TECHNOLOGY

Applicable Material



Physicochemical And Mechanical Properties Of Additive Manufacturing

MATERIAL	TENSILE STRENGTH (MPa)	YIELD STRENGTH (MPa)	ELONGATION (%)	ELASTICITY MODULUS (GPa)	HARDNESS AFTER HEAT TRATMENT (HRC)	HEAT CONDUCTIVITY ($W \cdot m^{-1} \cdot K^{-1}$)	ELECTRICAL RESISTIVITY ($\Omega \cdot m$)
Ti6Al4V ELI	1020	925	12	120	34	15.24	1.6
In718	1400	1100	12	185	47	17.4	1.15
In625	900	650	30	190	27		1.29
HX	650	550	25	195	24		
316L	600	400	30	180	28	15.1	0.73
17-4PH	1300	1200	12	196	36	18.3	
18Ni300	1950	1850	5	180	50	15.0	
420	1750	1450	8		55		
CX	1720	1640	7		51		
AlSi10Mg	300	180	8	70	120(HBW)	147	0.0468
Pure Copper	200	70	70	115	40(HB)	397	0.0178
Bronze	330	170	60	124	70(HB)	153	0.128



WUXI SPEED AUTOMOTIVE & NEW ENERGY TECHNOLOGY CO., LTD.



+86-13916379483



+86-0510-85581996



www.speedturbo.net



1st Floor, Building A, No.10 LianHe Road, HuDai
Industrial Park, Binhu District, Wuxi China, 214161



sales@speedturbo.net



Speed Turbo Technology



SpeedTurboTech



[speedturbotechology](https://www.linkedin.com/company/speedturbotech)